

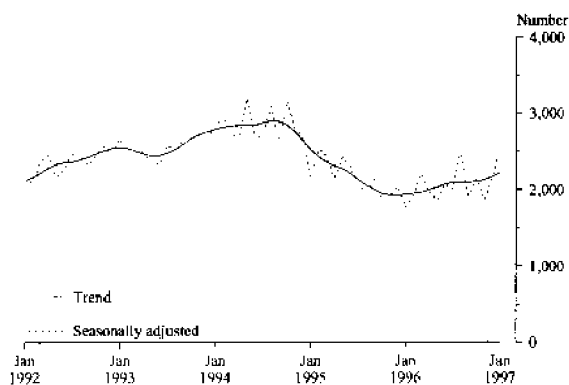
## BUILDING APPROVALS, VICTORIA, JANUARY 1997

### MAIN FEATURES

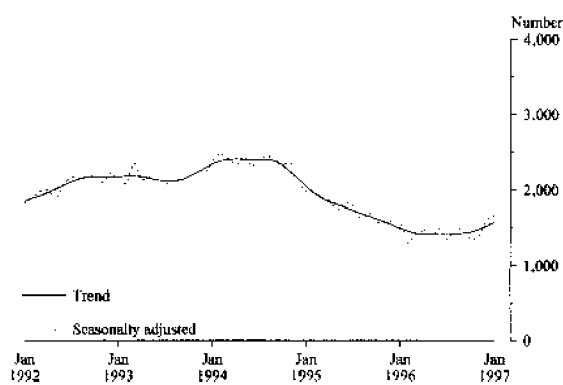
#### NUMBER OF DWELLING UNITS APPROVED

|                     | January<br>1996 | December<br>1996 | January<br>1997 | January 1996 to<br>January 1997<br>change | December 1996 to<br>January 1997<br>change |
|---------------------|-----------------|------------------|-----------------|---|--|
| Original series     | 1,519           | 2,005            | 2,144           | 41.1%                                     | 6.9%                                       |
| Seasonally adjusted | 1,768           | 2,127            | 2,535           | 43.4%                                     | 19.2%                                      |
| Trend estimate      | 1,945           | 2,168            | 2,223           | 14.3%                                     | 2.5%                                       |

TOTAL DWELLING UNITS APPROVED



PRIVATE SECTOR HOUSES APPROVED



#### Residential building

- The trend for total dwelling units approved increased by 2.5% in January and 14.3% over the last year.
- The trend for the number of private sector house approvals increased for the 5th consecutive month with an increase of 3.3% in January.
- In original terms there were 2,144 dwelling units approved in January. Of the total, 1,395 were private sector houses and 674 were private other residential dwelling units.
- The trend for the value of new residential building approved increased 1.5% in January to \$213.5 million and is 15.7% up on a year ago.
- At average 1989-90 prices the total value of new residential building for the December quarter 1996 was \$587.7 million, 9.6% lower than the previous quarter but 3.6% higher than the December quarter 1995.

#### Non-residential building

- The value of non-residential projects approved in January was \$228.1 million. Of the total, the miscellaneous category accounted for \$45.8 million followed by shops (\$37.3 million), other business premises (\$33.9 million), factories (\$29.3 million) and offices (\$24.2 million).
- There were 11 projects valued at \$5 million or more and 26 between \$1 million and \$5 million.
- At average 1989-90 prices the value of non-residential building approved for the December quarter 1996 was \$845.5 million, 39.6% higher than the previous quarter but 8.6% lower than the December quarter 1995.

*NOTE: For the period May 1996 to November 1996 privately certified jobs in the local government authority of Casey have been omitted from data reported to the ABS. These jobs have now been identified and included, and the months May to November 1996 have been revised.*

#### INQUIRIES

- for more information about statistics in this publication and the availability of related unpublished statistics, contact John Radimissis on Adelaide (08) 8237 7590 or any ABS State Office.
- for information about other ABS statistics and services please contact Information Services on Adelaide (08) 8237 7100, call at 55 Currie Street, Adelaide, or write to Information Services, ABS, GPO Box 2272, Adelaide SA 5001.

## RELIABILITY OF CONTEMPORARY TREND ESTIMATES

The tables below present trend estimates of selected building approvals series for the six months August 1996 to January 1997.

Analysis of building approvals series has shown that the original series can be volatile and that the initial estimates of a month's trend value can be revised substantially. In particular, some months can elapse before a turning point in the trend series is identified reliably. Generally, the size of revisions to the trend estimates will tend to be larger with greater volatility of the original series. Revisions to trend estimates will also occur with revisions to original data and re-estimation of seasonal adjustment factors. See paragraphs 19 and 20 of the Explanatory Notes for a more detailed explanation.

To illustrate the possible impact of future months' observations on the trend estimates for the latest months, the tables show the revisions to the trend estimates which would result if the movements in the seasonally adjusted estimates for next month (February 1997) were to equal the average monthly percentage change (regardless of sign) in the series over the last ten years.

For example, if the seasonally adjusted estimate for the number of private sector houses approved (the first table) were to increase by 5% in February 1997, the trend estimate for that month would be 1,678, a movement of 3.5%. The monthly movements in the trend estimates for November, December and January 1997 which are currently estimated to be 2.5%, 2.9% and 3.3% respectively, would be revised to 3.3%, 4.1% and 4.4%. On the other hand, a 5% seasonally adjusted decline in the number of private sector houses approved in February 1997 would produce a trend estimate for that month of 1,604, a movement of 2.0%, with the movements in the trend estimates for November, December and January 1997, being revised to 2.5%, 2.9% and 2.9% respectively.

### NUMBER OF PRIVATE SECTOR HOUSES APPROVED RELIABILITY OF TREND ESTIMATES

|           | Trend estimate |                               | Revised trend estimate if February 1997<br>seasonally adjusted estimate |                               |                            |                               |
|-----------|----------------|-------------------------------|---|-------------------------------|----------------------------|-------------------------------|
|           |                |                               | is up 5% on January 1997  |                               | is down 5% on January 1997 |                               |
|           | No.            | % change on<br>previous month | No.   | % change on<br>previous month | No.                        | % change on<br>previous month |
| 1996--    |                |                               |   |                               |                            |                               |
| August    | 1,420          | -0.4                          | 1,416   | -0.6                          | 1,420                      | -0.4                          |
| September | 1,425          | 0.3                           | 1,417   | 0.1                           | 1,423                      | 0.3                           |
| October   | 1,448          | 1.6                           | 1,444   | 1.9                           | 1,447                      | 1.7                           |
| November  | 1,483          | 2.5                           | 1,492   | 3.3                           | 1,484                      | 2.5                           |
| December  | 1,526          | 2.9                           | 1,553   | 4.1                           | 1,527                      | 2.9                           |
| 1997--    |                |                               |   |                               |                            |                               |
| January   | 1,576          | 3.3                           | 1,621   | 4.4                           | 1,572                      | 2.9                           |
| February  | n.y.a.         | n.y.a.                        | 1,678   | 3.5                           | 1,604                      | 2.0                           |

### TOTAL NUMBER OF DWELLING UNITS APPROVED RELIABILITY OF TREND ESTIMATES

|           | Trend estimate |                               | Revised trend estimate if February 1997<br>seasonally adjusted estimate |                               |                            |                               |
|-----------|----------------|-------------------------------|---|-------------------------------|----------------------------|-------------------------------|
|           |                |                               | is up 8% on January 1997  |                               | is down 8% on January 1997 |                               |
|           | No.            | % change on<br>previous month | No.   | % change on<br>previous month | No.                        | % change on<br>previous month |
| 1996—     |                |                               |   |                               |                            |                               |
| August    | 2,096          | 0.1                           | 2,087   | -0.4                          | 2,094                      | 0.0                           |
| September | 2,100          | 0.2                           | 2,083   | -0.2                          | 2,096                      | 0.1                           |
| October   | 2,107          | 0.3                           | 2,099   | 0.8                           | 2,106                      | 0.4                           |
| November  | 2,128          | 1.0                           | 2,148   | 2.3                           | 2,131                      | 1.2                           |
| December  | 2,168          | 1.9                           | 2,240   | 4.3                           | 2,183                      | 2.5                           |
| 1997—     |                |                               |   |                               |                            |                               |
| January   | 2,223          | 2.6                           | 2,359   | 5.3                           | 2,251                      | 3.1                           |
| February  | n.y.a.         | n.y.a.                        | 2,469   | 4.7                           | 2,307                      | 2.5                           |

TABLE 1. DWELLING UNITS APPROVED

| Period                                    | New houses     |               |        | New other residential buildings |               |       | Conversions,<br>etc. | Total (a)      |               |        |
|---|----------------|---------------|--------|---------------------------------|---------------|-------|----------------------|----------------|---------------|--------|
|   | Private sector | Public sector | Total  | Private sector                  | Public sector | Total |                      | Private sector | Public sector | Total  |
| <b>MELBOURNE STATISTICAL DIVISION (b)</b> |                |               |        |                                 |               |       |                      |                |               |        |
| 1993-94                                   | 17,878         | 585           | 18,463 | 2,920                           | 414           | 3,334 | 1,152                | 21,844         | 1,105         | 22,949 |
| 1994-95                                   | 17,816         | 307           | 18,123 | 3,100                           | 581           | 3,681 | 1,330                | 22,240         | 894           | 23,134 |
| 1995-96                                   | 12,690         | 345           | 13,035 | 2,986                           | 723           | 3,709 | 617                  | 16,275         | 1,086         | 17,361 |
| 1995-96                                   |                |               |        |                                 |               |       |                      |                |               |        |
| July-January                              | 8,118          | 254           | 8,372  | 1,118                           | 517           | 1,635 | 110                  | 9,346          | 771           | 10,117 |
| 1996-97                                   |                |               |        |                                 |               |       |                      |                |               |        |
| July-January                              | 7,062          | 100           | 7,162  | 3,492                           | 243           | 3,735 | 484                  | 11,017         | 344           | 11,381 |
| 1995—                                     |                |               |        |                                 |               |       |                      |                |               |        |
| November                                  | 1,201          | 72            | 1,273  | 59                              | 165           | 224   | 1                    | 1,261          | 237           | 1,498  |
| December                                  | 968            | 34            | 1,002  | 266                             | 62            | 328   | 68                   | 1,302          | 96            | 1,398  |
| 1996—                                     |                |               |        |                                 |               |       |                      |                |               |        |
| January                                   | 859            | 5             | 864    | 64                              | 83            | 147   | 23                   | 946            | 88            | 1,034  |
| February                                  | 833            | 7             | 840    | 437                             | 34            | 471   | 88                   | 1,357          | 42            | 1,399  |
| March                                     | 809            | 10            | 819    | 325                             | 50            | 375   | 336                  | 1,461          | 69            | 1,530  |
| April                                     | 910            | 33            | 943    | 267                             | 100           | 367   | 66                   | 1,235          | 141           | 1,376  |
| May                                       | 1,056          | 33            | 1,089  | 400                             | 11            | 411   | 5                    | 1,461          | 44            | 1,505  |
| June                                      | 964            | 8             | 972    | 439                             | 11            | 450   | 12                   | 1,415          | 19            | 1,434  |
| July                                      | 1,033          | 22            | 1,055  | 507                             | 106           | 613   | 19                   | 1,558          | 129           | 1,687  |
| August                                    | 1,135          | 18            | 1,153  | 773                             | 34            | 807   | 47                   | 1,955          | 52            | 2,007  |
| September                                 | 1,012          | 5             | 1,017  | 263                             | 52            | 315   | 30                   | 1,305          | 57            | 1,362  |
| October                                   | 1,037          | 9             | 1,046  | 646                             | 22            | 668   | 116                  | 1,799          | 31            | 1,830  |
| November                                  | 907            | 4             | 911    | 390                             | 17            | 407   | 40                   | 1,337          | 21            | 1,358  |
| December                                  | 999            | 9             | 1,008  | 271                             | 8             | 279   | 208                  | 1,478          | 17            | 1,495  |
| 1997—                                     |                |               |        |                                 |               |       |                      |                |               |        |
| January                                   | 939            | 33            | 972    | 642                             | 4             | 646   | 24                   | 1,605          | 37            | 1,642  |
| <b>VICTORIA</b>                           |                |               |        |                                 |               |       |                      |                |               |        |
| 1993-94                                   | 27,227         | 830           | 28,057 | 3,109                           | 584           | 3,693 | 1,167                | 31,396         | 1,521         | 32,917 |
| 1994-95                                   | 25,284         | 601           | 25,885 | 3,225                           | 808           | 4,033 | 1,347                | 29,849         | 1,416         | 31,265 |
| 1995-96                                   | 18,425         | 464           | 18,889 | 3,218                           | 937           | 4,155 | 663                  | 22,277         | 1,430         | 23,707 |
| 1995-96                                   |                |               |        |                                 |               |       |                      |                |               |        |
| July-January                              | 11,473         | 312           | 11,785 | 1,158                           | 660           | 1,818 | 122                  | 12,753         | 972           | 13,725 |
| 1996-97                                   |                |               |        |                                 |               |       |                      |                |               |        |
| July-January                              | 10,372         | 144           | 10,516 | 3,791                           | 299           | 4,090 | 522                  | 14,681         | 447           | 15,128 |
| 1995                                      |                |               |        |                                 |               |       |                      |                |               |        |
| November                                  | 1,731          | 80            | 1,811  | 84                              | 188           | 272   | 3                    | 1,818          | 268           | 2,086  |
| December                                  | 1,380          | 46            | 1,426  | 267                             | 62            | 329   | 69                   | 1,716          | 108           | 1,824  |
| 1996—                                     |                |               |        |                                 |               |       |                      |                |               |        |
| January                                   | 1,316          | 14            | 1,330  | 64                              | 102           | 166   | 23                   | 1,403          | 116           | 1,519  |
| February                                  | 1,298          | 12            | 1,310  | 489                             | 38            | 527   | 94                   | 1,880          | 51            | 1,931  |
| March                                     | 1,331          | 25            | 1,356  | 360                             | 65            | 425   | 338                  | 2,020          | 99            | 2,119  |
| April                                     | 1,348          | 40            | 1,388  | 286                             | 113           | 399   | 83                   | 1,698          | 172           | 1,870  |
| May                                       | 1,540          | 53            | 1,593  | 448                             | 42            | 490   | 12                   | 2,000          | 95            | 2,095  |
| June                                      | 1,435          | 22            | 1,457  | 477                             | 19            | 496   | 14                   | 1,926          | 41            | 1,967  |
| July                                      | 1,511          | 34            | 1,545  | 533                             | 109           | 642   | 22                   | 2,065          | 144           | 2,209  |
| August                                    | 1,578          | 24            | 1,602  | 825                             | 42            | 867   | 53                   | 2,456          | 66            | 2,522  |
| September                                 | 1,476          | 8             | 1,484  | 304                             | 63            | 367   | 43                   | 1,823          | 71            | 1,894  |
| October                                   | 1,560          | 19            | 1,579  | 712                             | 22            | 734   | 120                  | 2,392          | 41            | 2,433  |
| November                                  | 1,406          | 7             | 1,413  | 426                             | 39            | 465   | 43                   | 1,875          | 46            | 1,921  |
| December                                  | 1,446          | 18            | 1,464  | 317                             | 8             | 325   | 216                  | 1,976          | 29            | 2,005  |
| 1997                                      |                |               |        |                                 |               |       |                      |                |               |        |
| January                                   | 1,395          | 34            | 1,429  | 674                             | 16            | 690   | 25                   | 2,094          | 50            | 2,144  |

(a) Includes Conversions, etc. See paragraphs 11-13 of the Explanatory Notes. (b) As a result of minor changes to the Melbourne Statistical Division boundary, data for the periods prior to July 1995 are not strictly comparable to data for periods from July 1995 onwards.

TABLE 2. VALUE OF BUILDING APPROVED  
(\$ million)

| Period                             | New residential building |                  |         |                             |                  |       |                   |                  |         | Alterations<br>and<br>additions<br>to<br>residential<br>buildings | Non-residential<br>building |         | Total building    |         |
|------------------------------------|--------------------------|------------------|---------|-----------------------------|------------------|-------|-------------------|------------------|---------|---|-----------------------------|---------|-------------------|---------|
|                                    | Houses                   |                  |         | Other residential buildings |                  |       | Total             |                  |         |   | Private<br>sector           | Total   | Private<br>sector | Total   |
|                                    | Private<br>sector        | Public<br>sector | Total   | Private<br>sector           | Public<br>sector | Total | Private<br>sector | Public<br>sector | Total   |   |                             |         |                   |         |
|                                    |                          |                  |         |                             |                  |       |                   |                  |         |   |                             |         |                   |         |
| MELBOURNE STATISTICAL DIVISION (a) |                          |                  |         |                             |                  |       |                   |                  |         |   |                             |         |                   |         |
| 1993-94                            | 1,683.9                  | 40.5             | 1,724.4 | 241.8                       | 31.1             | 272.9 | 1,925.7           | 71.6             | 1,997.3 | 509.2   | 1,619.8                     | 2,138.6 | 4,046.0           | 4,645.1 |
| 1994-95                            | 1,732.4                  | 23.5             | 1,755.9 | 380.7                       | 46.4             | 427.0 | 2,113.1           | 69.8             | 2,182.9 | 571.9   | 1,072.3                     | 1,655.8 | 3,749.0           | 4,410.6 |
| 1995-96                            | 1,315.8                  | 32.6             | 1,348.4 | 308.5                       | 53.9             | 362.4 | 1,624.3           | 86.5             | 1,710.8 | 467.2   | 1,352.5                     | 1,934.5 | 3,422.5           | 4,112.5 |
| 1995-96<br>July-January            | 814.0                    | 24.7             | 838.6   | 138.5                       | 35.1             | 173.6 | 952.5             | 59.8             | 1,012.2 | 256.9   | 851.1                       | 1,193.8 | 2,048.0           | 2,463.0 |
| 1996-97<br>July-January            | 796.9                    | 12.1             | 809.0   | 349.3                       | 14.7             | 364.0 | 1,146.2           | 26.8             | 1,173.1 | 302.1   | 898.2                       | 1,203.6 | 2,331.3           | 2,678.8 |
| 1995                               |                          |                  |         |                             |                  |       |                   |                  |         |   |                             |         |                   |         |
| November                           | 123.8                    | 7.5              | 131.3   | 5.5                         | 12.3             | 17.8  | 129.3             | 19.8             | 149.1   | 41.9  | 110.0                       | 159.1   | 279.0             | 350.0   |
| December                           | 95.7                     | 2.2              | 97.9    | 42.7                        | 4.0              | 46.6  | 138.4             | 6.2              | 144.5   | 32.0  | 95.7                        | 137.5   | 264.0             | 314.0   |
| 1996—                              |                          |                  |         |                             |                  |       |                   |                  |         |   |                             |         |                   |         |
| January                            | 86.6                     | 0.3              | 86.9    | 4.8                         | 5.4              | 10.2  | 91.4              | 5.7              | 97.1    | 33.0  | 64.1                        | 125.5   | 185.3             | 255.5   |
| February                           | 87.8                     | 0.8              | 88.6    | 58.8                        | 4.6              | 63.3  | 146.6             | 5.4              | 151.9   | 40.9  | 114.8                       | 126.5   | 301.2             | 319.3   |
| March                              | 88.6                     | 0.8              | 89.4    | 27.1                        | 3.8              | 31.0  | 115.8             | 4.6              | 120.4   | 49.8  | 66.6                        | 152.9   | 230.2             | 323.0   |
| April                              | 99.1                     | 3.1              | 102.2   | 17.9                        | 9.2              | 27.1  | 117.0             | 12.3             | 129.3   | 44.8  | 89.5                        | 136.6   | 249.4             | 310.7   |
| May                                | 119.6                    | 2.6              | 122.2   | 31.4                        | 0.7              | 32.1  | 151.0             | 3.3              | 154.4   | 39.4  | 154.2                       | 221.6   | 342.3             | 415.3   |
| June                               | 106.6                    | 0.6              | 107.2   | 34.8                        | 0.5              | 35.3  | 141.5             | 1.1              | 142.5   | 35.4  | 76.2                        | 103.2   | 251.4             | 281.1   |
| July                               | 110.8                    | 1.6              | 112.4   | 62.7                        | 6.8              | 69.5  | 173.5             | 8.4              | 181.9   | 41.8  | 87.2                        | 105.1   | 300.6             | 328.9   |
| August                             | 126.6                    | 1.5              | 128.1   | 88.8                        | 2.1              | 90.9  | 215.4             | 3.6              | 219.0   | 46.1  | 118.4                       | 163.2   | 378.8             | 428.2   |
| September                          | 114.1                    | 0.9              | 115.0   | 21.0                        | 2.2              | 23.2  | 135.1             | 3.0              | 138.1   | 42.0  | 117.8                       | 151.5   | 294.0             | 331.6   |
| October                            | 117.6                    | 0.8              | 118.4   | 54.6                        | 2.1              | 56.8  | 172.3             | 2.9              | 175.2   | 53.3  | 132.0                       | 175.1   | 355.7             | 403.6   |
| November                           | 106.8                    | 0.3              | 107.1   | 39.0                        | 0.8              | 39.8  | 145.8             | 1.1              | 146.9   | 40.2  | 130.1                       | 242.8   | 312.9             | 430.0   |
| December                           | 114.9                    | 1.4              | 116.2   | 24.6                        | 0.5              | 25.0  | 139.4             | 1.8              | 141.3   | 39.0  | 142.8                       | 162.1   | 317.8             | 342.4   |
| 1997                               |                          |                  |         |                             |                  |       |                   |                  |         |   |                             |         |                   |         |
| January                            | 106.1                    | 5.8              | 111.9   | 58.6                        | 0.2              | 58.9  | 164.7             | 6.0              | 170.7   | 39.7  | 169.8                       | 203.7   | 371.5             | 414.1   |
| VICTORIA                           |                          |                  |         |                             |                  |       |                   |                  |         |   |                             |         |                   |         |
| 1993-94                            | 2,465.2                  | 58.8             | 2,524.0 | 252.8                       | 40.9             | 293.7 | 2,718.0           | 99.7             | 2,817.7 | 623.5   | 1,853.6                     | 2,502.7 | 5,186.0           | 5,943.9 |
| 1994-95                            | 2,383.4                  | 41.9             | 2,425.3 | 388.8                       | 59.9             | 448.7 | 2,772.2           | 101.8            | 2,874.0 | 685.1   | 1,274.7                     | 1,975.2 | 4,717.5           | 5,534.3 |
| 1995-96                            | 1,845.2                  | 42.2             | 1,887.4 | 325.9                       | 66.4             | 392.3 | 2,171.1           | 108.7            | 2,279.7 | 590.1   | 1,721.6                     | 2,452.4 | 4,448.5           | 5,322.3 |
| 1995-96<br>July-January            | 1,119.3                  | 29.7             | 1,149.1 | 141.9                       | 43.7             | 185.7 | 1,261.2           | 73.5             | 1,334.7 | 324.0   | 1,039.3                     | 1,470.5 | 2,605.5           | 3,129.2 |
| 1996-97<br>July-January            | 1,119.3                  | 15.9             | 1,135.2 | 370.4                       | 18.4             | 388.8 | 1,489.7           | 34.3             | 1,524.0 | 378.8   | 1,068.9                     | 1,459.4 | 2,916.2           | 3,362.2 |
| 1995                               |                          |                  |         |                             |                  |       |                   |                  |         |   |                             |         |                   |         |
| November                           | 172.5                    | 8.3              | 180.8   | 7.7                         | 14.5             | 22.2  | 180.2             | 22.8             | 203.1   | 52.7  | 137.6                       | 212.9   | 367.0             | 468.7   |
| December                           | 131.6                    | 3.7              | 135.3   | 43.0                        | 4.0              | 47.0  | 174.6             | 7.6              | 182.3   | 41.1  | 114.9                       | 172.4   | 327.2             | 395.8   |
| 1996—                              |                          |                  |         |                             |                  |       |                   |                  |         |   |                             |         |                   |         |
| January                            | 129.2                    | 1.0              | 130.2   | 4.8                         | 6.6              | 11.4  | 134.0             | 7.6              | 141.6   | 40.9  | 95.4                        | 163.5   | 266.8             | 346.1   |
| February                           | 130.5                    | 1.1              | 131.6   | 62.6                        | 4.8              | 67.4  | 193.1             | 5.9              | 199.0   | 49.8  | 182.7                       | 200.1   | 424.4             | 448.9   |
| March                              | 138.1                    | 2.1              | 140.2   | 29.2                        | 4.9              | 34.1  | 167.4             | 6.9              | 174.3   | 63.1  | 89.2                        | 185.6   | 315.8             | 423.0   |
| April                              | 142.5                    | 3.7              | 146.3   | 19.2                        | 9.9              | 29.0  | 161.7             | 13.6             | 175.3   | 55.3  | 107.6                       | 164.7   | 321.7             | 395.4   |
| May                                | 165.0                    | 4.2              | 169.2   | 35.4                        | 2.3              | 37.7  | 200.4             | 6.6              | 206.9   | 53.4  | 184.7                       | 259.6   | 433.0             | 519.9   |
| June                               | 149.7                    | 1.3              | 151.1   | 37.6                        | 0.9              | 38.4  | 187.3             | 2.2              | 189.5   | 44.5  | 118.1                       | 171.9   | 348.1             | 405.9   |
| July                               | 155.8                    | 2.7              | 158.5   | 64.3                        | 7.0              | 71.3  | 220.0             | 9.7              | 229.8   | 52.1  | 109.3                       | 135.3   | 378.5             | 417.1   |
| August                             | 168.9                    | 1.8              | 170.7   | 93.2                        | 2.8              | 96.0  | 262.1             | 4.6              | 266.7   | 54.7  | 140.5                       | 200.1   | 455.8             | 521.4   |
| September                          | 160.3                    | 1.2              | 161.5   | 23.5                        | 2.8              | 26.4  | 183.8             | 4.0              | 187.9   | 53.3  | 140.3                       | 182.2   | 375.8             | 423.3   |
| October                            | 167.7                    | 1.4              | 169.1   | 58.9                        | 2.1              | 61.0  | 226.6             | 3.5              | 230.2   | 66.3  | 153.5                       | 205.5   | 443.1             | 502.0   |
| November                           | 155.3                    | 0.5              | 155.8   | 41.6                        | 2.3              | 43.8  | 196.9             | 2.8              | 199.7   | 52.1  | 157.7                       | 286.5   | 402.7             | 538.3   |
| December                           | 159.2                    | 2.3              | 161.5   | 27.7                        | 0.5              | 28.2  | 186.9             | 2.8              | 189.7   | 49.4  | 177.7                       | 221.6   | 409.5             | 460.8   |
| 1997—                              |                          |                  |         |                             |                  |       |                   |                  |         |   |                             |         |                   |         |
| January                            | 152.1                    | 5.9              | 158.0   | 61.3                        | 1.0              | 62.2  | 213.3             | 6.9              | 220.2   | 50.9  | 189.9                       | 228.1   | 450.6             | 499.3   |

(a) As a result of minor changes to the Melbourne Statistical Division boundary, data for the periods prior to July 1995 are not strictly comparable to data for periods from July 1995 onwards.

**TABLE 3. NUMBER AND VALUE OF BUILDING APPROVED  
SEASONALLY ADJUSTED AND TREND ESTIMATES (a)**

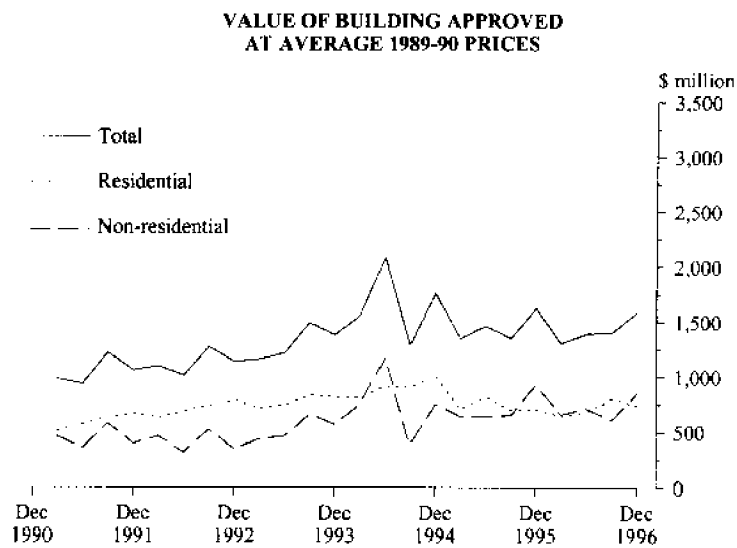
| Period                     | Number of dwelling units (b) |       |                |       | Value (\$m)              |  |
|----------------------------|------------------------------|-------|----------------|-------|--------------------------|--|
|                            | Houses                       |       | Total          |       | New residential building | Alterations and additions to residential buildings |
|                            | Private sector               | Total | Private sector | Total |                          |  |
| <b>SEASONALLY ADJUSTED</b> |                              |       |                |       |                          |  |
| <i>1995—</i>               |                              |       |                |       |                          |  |
| November                   | 1,574                        | 1,655 | 1,710          | 1,924 | 189.0                    | 47.6   |
| December                   | 1,606                        | 1,623 | 1,880          | 2,040 | 202.3                    | 47.3   |
| <i>1996</i>                |                              |       |                |       |                          |  |
| January                    | 1,580                        | 1,573 | 1,722          | 1,768 | 157.3                    | 49.1   |
| February                   | 1,293                        | 1,304 | 1,870          | 1,924 | 194.5                    | 50.0   |
| March                      | 1,423                        | 1,408 | 2,153          | 2,212 | 190.2                    | 61.8   |
| April                      | 1,478                        | 1,509 | 1,819          | 1,970 | 186.2                    | 55.7   |
| May                        | 1,398                        | 1,479 | 1,765          | 1,859 | 185.5                    | 47.2   |
| June                       | 1,485                        | 1,506 | 2,011          | 2,078 | 203.4                    | 49.4   |
| July                       | 1,341                        | 1,399 | 1,854          | 2,000 | 207.6                    | 52.0   |
| August                     | 1,498                        | 1,557 | 2,329          | 2,513 | 267.4                    | 56.1   |
| September                  | 1,472                        | 1,479 | 1,860          | 1,916 | 190.8                    | 55.1   |
| October                    | 1,344                        | 1,404 | 2,075          | 2,148 | 198.5                    | 53.4   |
| November                   | 1,380                        | 1,328 | 1,880          | 1,861 | 197.0                    | 48.3   |
| December                   | 1,614                        | 1,599 | 2,048          | 2,127 | 196.0                    | 54.0   |
| <i>1997—</i>               |                              |       |                |       |                          |  |
| January                    | 1,665                        | 1,713 | 2,607          | 2,535 | 248.6                    | 61.5   |
| <b>TREND ESTIMATES</b>     |                              |       |                |       |                          |  |
| <i>1995—</i>               |                              |       |                |       |                          |  |
| November                   | 1,578                        | 1,609 | 1,803          | 1,929 | 189.2                    | 46.9   |
| December                   | 1,535                        | 1,553 | 1,819          | 1,932 | 187.1                    | 48.8   |
| <i>1996—</i>               |                              |       |                |       |                          |  |
| January                    | 1,496                        | 1,506 | 1,843          | 1,945 | 184.5                    | 50.9   |
| February                   | 1,458                        | 1,469 | 1,862          | 1,952 | 182.3                    | 52.4   |
| March                      | 1,430                        | 1,446 | 1,885          | 1,969 | 183.8                    | 53.2   |
| April                      | 1,419                        | 1,445 | 1,909          | 1,997 | 189.7                    | 53.2   |
| May                        | 1,421                        | 1,460 | 1,931          | 2,035 | 198.3                    | 52.9   |
| June                       | 1,427                        | 1,476 | 1,956          | 2,075 | 207.3                    | 52.6   |
| July                       | 1,425                        | 1,475 | 1,972          | 2,094 | 212.7                    | 52.3   |
| August                     | 1,420                        | 1,461 | 1,984          | 2,096 | 213.6                    | 52.4   |
| September                  | 1,425                        | 1,452 | 2,009          | 2,100 | 212.0                    | 52.9   |
| October                    | 1,448                        | 1,463 | 2,042          | 2,107 | 209.5                    | 53.6   |
| November                   | 1,483                        | 1,491 | 2,092          | 2,128 | 208.7                    | 54.1   |
| December                   | 1,526                        | 1,530 | 2,161          | 2,168 | 210.4                    | 54.9   |
| <i>1997—</i>               |                              |       |                |       |                          |  |
| January                    | 1,576                        | 1,577 | 2,245          | 2,223 | 213.5                    | 55.8   |

(a) See paragraphs 17-24 of the Explanatory Notes. (b) Includes Conversions, etc. See paragraphs 11-13 of the Explanatory Notes.

**TABLE 4. VALUE OF BUILDING APPROVED AT AVERAGE 1989-90 PRICES (a)**  
(**\$ million**)

| Period     | New residential building |         |                             |         | Alterations and additions to residential buildings | Non-residential building |         | Total building |         |
|------------|--------------------------|---------|-----------------------------|---------|--|--------------------------|---------|----------------|---------|
|            | Houses                   |         | Other residential buildings | Total   |  | Private sector           | Total   | Private sector | Total   |
|            | Private sector           | Total   |                             |         |  |                          |         |                |         |
| 1993-94    | 2,354.9                  | 2,411.2 | 367.3                       | 2,778.5 | 595.4  | 2,330.2                  | 3,148.6 | 5,672.0        | 6,522.5 |
| 1994-95    | 2,220.1                  | 2,259.0 | 543.9                       | 2,802.9 | 637.9  | 1,564.3                  | 2,423.5 | 4,960.2        | 5,864.3 |
| 1995-96    | 1,681.6                  | 1,720.2 | 465.5                       | 2,185.7 | 540.6  | 2,070.6                  | 2,949.3 | 4,730.0        | 5,675.6 |
| 1995—      |                          |         |                             |         |  |                          |         |                |         |
| Sept. qtr. | 480.1                    | 493.4   | 82.9                        | 576.4   | 124.9  | 463.6                    | 652.4   | 1,147.5        | 1,353.6 |
| Dec. qtr.  | 429.8                    | 442.7   | 124.7                       | 567.5   | 135.1  | 675.2                    | 924.7   | 1,349.8        | 1,627.3 |
| 1996       |                          |         |                             |         |  |                          |         |                |         |
| Mar. qtr.  | 364.6                    | 368.5   | 133.8                       | 502.2   | 141.0  | 440.9                    | 659.3   | 1,074.7        | 1,302.5 |
| June qtr.  | 407.0                    | 415.6   | 124.1                       | 539.7   | 139.6  | 490.9                    | 712.9   | 1,158.0        | 1,392.1 |
| Sept. qtr. | 418.5                    | 423.6   | 226.6                       | 650.2   | 144.4  | 453.8                    | 605.7   | 1,245.9        | 1,400.3 |
| Dec. qtr.  | 428.7                    | 432.4   | 155.3                       | 587.7   | 152.4  | 581.5                    | 845.5   | 1,325.3        | 1,585.6 |

(a) Constant price estimates are subject to revision each quarter as more up to date information on prices and commodity compositions becomes available.



**TABLE 5. VALUE OF BUILDING APPROVED, BY CLASS OF BUILDING AND OWNERSHIP**  
(*\$ million*)

| Class of building                                  | 1994-95        | 1995-96        | July-January   |                | 1996         |              | 1997         |
|--|----------------|----------------|----------------|----------------|--------------|--------------|--------------|
|  |                |                | 1995-96        | 1996-97        | November     | December     | January      |
| <b>PRIVATE SECTOR</b>                              |                |                |                |                |              |              |              |
| New houses   | 2,383.4        | 1,845.2        | 1,119.3        | 1,119.3        | 155.3        | 159.2        | 152.1        |
| New other residential buildings                    | 388.8          | 325.9          | 141.9          | 370.4          | 41.6         | 27.7         | 61.3         |
| <i>Total new residential building</i>              | <i>2,772.2</i> | <i>2,171.1</i> | <i>1,261.2</i> | <i>1,489.7</i> | <i>196.9</i> | <i>186.9</i> | <i>213.3</i> |
| Alterations and additions to residential buildings | 670.6          | 555.8          | 305.0          | 357.6          | 48.2         | 44.9         | 47.4         |
| Hotels, etc.                                       | 47.0           | 135.2          | 115.6          | 122.5          | 14.5         | 47.4         | 17.4         |
| Shops  | 351.0          | 365.0          | 211.3          | 188.0          | 20.0         | 18.1         | 31.7         |
| Factories  | 206.8          | 227.6          | 135.7          | 187.8          | 29.5         | 40.8         | 28.9         |
| Offices  | 238.1          | 301.0          | 188.0          | 156.1          | 24.2         | 25.6         | 12.8         |
| Other business premises                            | 165.0          | 265.1          | 171.3          | 184.4          | 28.2         | 19.2         | 33.8         |
| Educational  | 77.4           | 80.6           | 39.4           | 42.6           | 5.5          | 6.0          | 4.4          |
| Religious  | 15.4           | 7.5            | 4.4            | 9.7            | 1.2          | 0.9          | 4.1          |
| Health   | 49.2           | 68.6           | 29.1           | 54.5           | 17.6         | 7.5          | 9.9          |
| Entertainment and recreational                     | 81.9           | 136.2          | 104.6          | 32.4           | 6.6          | 1.8          | 3.0          |
| Miscellaneous                                      | 42.9           | 134.7          | 40.2           | 90.8           | 10.1         | 10.5         | 43.9         |
| <i>Total non-residential building</i>              | <i>1,274.7</i> | <i>1,721.6</i> | <i>1,039.3</i> | <i>1,068.9</i> | <i>157.7</i> | <i>177.7</i> | <i>189.9</i> |
| <b>Total</b>                                       | <b>4,717.5</b> | <b>4,448.5</b> | <b>2,605.5</b> | <b>2,916.2</b> | <b>402.7</b> | <b>409.5</b> | <b>450.6</b> |
| <b>PUBLIC SECTOR</b>                               |                |                |                |                |              |              |              |
| New houses   | 41.9           | 42.2           | 29.7           | 15.9           | 0.5          | 2.3          | 5.9          |
| New other residential buildings                    | 59.9           | 66.4           | 43.7           | 18.4           | 2.3          | 0.5          | 1.0          |
| <i>Total new residential building</i>              | <i>101.8</i>   | <i>108.7</i>   | <i>73.5</i>    | <i>34.3</i>    | <i>2.8</i>   | <i>2.8</i>   | <i>6.9</i>   |
| Alterations and additions to residential buildings | 14.4           | 34.3           | 19.0           | 21.1           | 3.9          | 4.6          | 3.5          |
| Hotels, etc.                                       | 1.1            | 1.2            | 1.2            | 0.5            | —            | —            | —            |
| Shops  | 7.7            | 25.5           | 24.6           | 14.7           | 0.3          | 6.3          | 5.6          |
| Factories  | 12.4           | 3.0            | 2.5            | 20.5           | —            | —            | 0.4          |
| Offices  | 123.1          | 118.0          | 61.3           | 85.6           | 15.5         | 5.6          | 11.4         |
| Other business premises                            | 53.3           | 75.7           | 19.5           | 4.1            | 0.8          | 0.5          | 0.1          |
| Educational  | 226.3          | 284.3          | 168.3          | 96.1           | 8.7          | 18.1         | 17.2         |
| Religious  | —              | —              | —              | —              | —            | —            | —            |
| Health   | 71.8           | 68.0           | 40.9           | 105.4          | 76.0         | 6.0          | 0.1          |
| Entertainment and recreational                     | 148.6          | 115.3          | 95.7           | 23.4           | 9.5          | 3.0          | 1.5          |
| Miscellaneous                                      | 56.2           | 39.9           | 17.2           | 40.2           | 18.0         | 4.3          | 1.8          |
| <i>Total non-residential building</i>              | <i>700.5</i>   | <i>730.8</i>   | <i>431.2</i>   | <i>390.5</i>   | <i>128.9</i> | <i>43.9</i>  | <i>38.2</i>  |
| <b>Total</b>                                       | <b>816.7</b>   | <b>873.8</b>   | <b>523.7</b>   | <b>446.0</b>   | <b>135.5</b> | <b>51.2</b>  | <b>48.6</b>  |
| <b>TOTAL</b>                                       |                |                |                |                |              |              |              |
| New houses   | 2,425.3        | 1,887.4        | 1,149.1        | 1,135.2        | 155.8        | 161.5        | 158.0        |
| New other residential buildings                    | 448.7          | 392.3          | 185.7          | 388.8          | 43.8         | 28.2         | 62.2         |
| <i>Total new residential building</i>              | <i>2,874.0</i> | <i>2,279.7</i> | <i>1,334.7</i> | <i>1,524.0</i> | <i>199.7</i> | <i>189.7</i> | <i>220.2</i> |
| Alterations and additions to residential buildings | 685.1          | 590.1          | 324.0          | 378.8          | 52.1         | 49.4         | 50.9         |
| Hotels, etc.                                       | 48.1           | 136.4          | 116.7          | 123.1          | 14.5         | 47.4         | 17.4         |
| Shops  | 358.8          | 390.4          | 235.9          | 202.7          | 20.4         | 24.4         | 37.3         |
| Factories  | 219.2          | 230.6          | 138.2          | 208.3          | 29.5         | 40.8         | 29.3         |
| Offices  | 361.2          | 419.0          | 249.3          | 241.8          | 39.7         | 31.1         | 24.2         |
| Other business premises                            | 218.3          | 340.8          | 190.8          | 188.5          | 29.1         | 19.7         | 33.9         |
| Educational  | 303.7          | 364.9          | 207.7          | 138.7          | 14.2         | 24.2         | 21.7         |
| Religious  | 15.4           | 7.5            | 4.4            | 9.7            | 1.2          | 0.9          | 4.1          |
| Health   | 121.0          | 136.6          | 70.0           | 159.9          | 93.7         | 13.5         | 10.0         |
| Entertainment and recreational                     | 230.4          | 251.5          | 200.3          | 55.8           | 16.1         | 4.8          | 4.5          |
| Miscellaneous                                      | 99.0           | 174.6          | 57.3           | 131.0          | 28.1         | 14.8         | 45.8         |
| <i>Total non-residential building</i>              | <i>1,975.2</i> | <i>2,452.4</i> | <i>1,470.5</i> | <i>1,459.4</i> | <i>286.5</i> | <i>221.6</i> | <i>228.1</i> |
| <b>Total</b>                                       | <b>5,534.3</b> | <b>5,322.3</b> | <b>3,129.2</b> | <b>3,362.2</b> | <b>538.3</b> | <b>460.8</b> | <b>499.3</b> |

**TABLE 6. NON-RESIDENTIAL BUILDING JOBS APPROVED, BY CLASS OF BUILDING AND VALUE SIZE GROUPS**

| Period                                | \$50,000 to less than \$200,000 |             | \$200,000 to less than \$500,000 |             | \$500,000 to less than \$1m |             | \$1m to less than \$5m |             | \$5m and over |             | Total |             |
|---------------------------------------|---------------------------------|-------------|----------------------------------|-------------|-----------------------------|-------------|------------------------|-------------|---------------|-------------|-------|-------------|
|                                       | No.                             | Value (\$m) | No.                              | Value (\$m) | No.                         | Value (\$m) | No.                    | Value (\$m) | No.           | Value (\$m) | No.   | Value (\$m) |
| <b>HOTELS, ETC.</b>                   |                                 |             |                                  |             |                             |             |                        |             |               |             |       |             |
| 1996 November                         | 4                               | 0.5         | 1                                | 0.2         | 1                           | 0.7         | 3                      | 6.2         | 1             | 7.0         | 10    | 14.5        |
| December                              | 8                               | 0.9         | —                                | —           | —                           | —           | 1                      | 2.5         | 1             | 44.0        | 10    | 47.4        |
| 1997 January                          | 8                               | 0.7         | 3                                | 0.7         | —                           | —           | —                      | —           | 1             | 16.0        | 12    | 17.4        |
| <b>SHOPS</b>                          |                                 |             |                                  |             |                             |             |                        |             |               |             |       |             |
| 1996 November                         | 59                              | 4.9         | 13                               | 3.5         | 3                           | 1.8         | 3                      | 4.7         | 3             | 5.5         | 79    | 20.4        |
| December                              | 51                              | 4.3         | 8                                | 2.2         | 7                           | 4.3         | 5                      | 13.7        | —             | —           | 71    | 24.4        |
| 1997 January                          | 33                              | 3.0         | 9                                | 2.4         | 5                           | 3.2         | 2                      | 2.4         | 4             | 26.3        | 53    | 37.3        |
| <b>FACTORIES</b>                      |                                 |             |                                  |             |                             |             |                        |             |               |             |       |             |
| 1996 November                         | 23                              | 2.3         | 15                               | 4.1         | 2                           | 1.4         | 3                      | 5.9         | 2             | 15.9        | 45    | 29.5        |
| December                              | 34                              | 3.7         | 19                               | 5.2         | 8                           | 5.2         | 3                      | 7.1         | 1             | 19.5        | 65    | 40.8        |
| 1997 January                          | 30                              | 3.1         | 13                               | 3.3         | 3                           | 2.0         | 4                      | 7.5         | 2             | 13.5        | 52    | 29.3        |
| <b>OFFICES</b>                        |                                 |             |                                  |             |                             |             |                        |             |               |             |       |             |
| 1996 November                         | 54                              | 4.9         | 17                               | 4.8         | 2                           | 1.2         | 4                      | 11.9        | 2             | 16.9        | 79    | 39.7        |
| December                              | 33                              | 3.3         | 19                               | 6.5         | 4                           | 3.3         | 3                      | 6.7         | 2             | 11.3        | 61    | 31.1        |
| 1997 January                          | 41                              | 4.1         | 19                               | 5.4         | 5                           | 3.2         | 2                      | 4.3         | 1             | 7.2         | 68    | 24.2        |
| <b>OTHER BUSINESS PREMISES</b>        |                                 |             |                                  |             |                             |             |                        |             |               |             |       |             |
| 1996 November                         | 36                              | 3.7         | 13                               | 4.3         | 5                           | 3.6         | 5                      | 12.5        | 1             | 5.0         | 60    | 29.1        |
| December                              | 27                              | 2.6         | 18                               | 4.9         | 11                          | 7.9         | 2                      | 4.3         | —             | —           | 58    | 19.7        |
| 1997 January                          | 16                              | 1.6         | 14                               | 4.1         | 1                           | 0.6         | 5                      | 14.4        | 1             | 13.2        | 37    | 33.9        |
| <b>EDUCATIONAL</b>                    |                                 |             |                                  |             |                             |             |                        |             |               |             |       |             |
| 1996 November                         | 18                              | 1.7         | 10                               | 2.9         | 2                           | 1.6         | 3                      | 8.0         | —             | —           | 33    | 14.2        |
| December                              | 23                              | 2.2         | 18                               | 5.4         | 2                           | 1.6         | 3                      | 9.6         | 1             | 5.5         | 47    | 24.2        |
| 1997 January                          | 15                              | 1.6         | 4                                | 1.6         | 4                           | 2.9         | 4                      | 5.4         | 1             | 10.2        | 28    | 21.7        |
| <b>RELIGIOUS</b>                      |                                 |             |                                  |             |                             |             |                        |             |               |             |       |             |
| 1996 November                         | —                               | —           | 4                                | 1.2         | —                           | —           | —                      | —           | —             | —           | 4     | 1.2         |
| December                              | 1                               | 0.1         | —                                | —           | 1                           | 0.8         | —                      | —           | —             | —           | 2     | 0.9         |
| 1997 January                          | 4                               | 0.5         | 4                                | 1.6         | —                           | —           | 1                      | 2.0         | —             | —           | 9     | 4.1         |
| <b>HEALTH</b>                         |                                 |             |                                  |             |                             |             |                        |             |               |             |       |             |
| 1996 November                         | 7                               | 0.6         | 2                                | 0.8         | —                           | —           | 9                      | 23.5        | 3             | 68.8        | 21    | 93.7        |
| December                              | 4                               | 0.5         | 4                                | 1.6         | 4                           | 2.4         | 5                      | 9.0         | —             | —           | 17    | 13.5        |
| 1997 January                          | 4                               | 0.4         | 1                                | 0.5         | 3                           | 1.6         | 3                      | 7.6         | —             | —           | 11    | 10.0        |
| <b>ENTERTAINMENT AND RECREATIONAL</b> |                                 |             |                                  |             |                             |             |                        |             |               |             |       |             |
| 1996 November                         | 12                              | 1.1         | 3                                | 0.8         | 3                           | 2.4         | 2                      | 5.6         | 1             | 6.3         | 21    | 16.1        |
| December                              | 9                               | 1.0         | 5                                | 1.5         | 1                           | 0.7         | 1                      | 1.6         | —             | —           | 16    | 4.8         |
| 1997 January                          | 5                               | 0.5         | 2                                | 0.6         | 2                           | 1.3         | 1                      | 2.1         | —             | —           | 10    | 4.5         |
| <b>MISCELLANEOUS</b>                  |                                 |             |                                  |             |                             |             |                        |             |               |             |       |             |
| 1996 November                         | 9                               | 0.9         | 6                                | 1.9         | 2                           | 1.9         | 7                      | 11.8        | 2             | 11.6        | 26    | 28.1        |
| December                              | 19                              | 2.1         | 12                               | 3.7         | —                           | —           | 2                      | 2.0         | 1             | 7.0         | 34    | 14.8        |
| 1997 January                          | 13                              | 1.0         | 7                                | 2.3         | 4                           | 2.7         | 4                      | 11.4        | 1             | 28.4        | 29    | 45.8        |
| <b>TOTAL NON-RESIDENTIAL BUILDING</b> |                                 |             |                                  |             |                             |             |                        |             |               |             |       |             |
| 1996 November                         | 222                             | 20.7        | 84                               | 24.5        | 20                          | 14.3        | 39                     | 90.0        | 13            | 137.0       | 378   | 286.5       |
| December                              | 209                             | 20.7        | 103                              | 31.0        | 38                          | 26.2        | 25                     | 56.5        | 6             | 87.3        | 381   | 221.6       |
| 1997 January                          | 169                             | 16.4        | 76                               | 22.5        | 27                          | 17.4        | 26                     | 57.1        | 11            | 114.7       | 309   | 228.1       |



**TABLE 7. NUMBER AND VALUE OF NEW DWELLING UNITS (a) APPROVED  
BY MATERIAL OF OUTER WALLS, JANUARY 1997**

| <i>Particulars</i>                        | <i>Private sector</i> |                       | <i>Public sector</i> |                       | <i>Total</i>  |                       |
|---|-----------------------|-----------------------|----------------------|-----------------------|---------------|-----------------------|
|   | <i>Number</i>         | <i>Value (\$'000)</i> | <i>Number</i>        | <i>Value (\$'000)</i> | <i>Number</i> | <i>Value (\$'000)</i> |
| <b>MELBOURNE STATISTICAL DIVISION (b)</b> |                       |                       |                      |                       |               |                       |
| <b>Houses</b>                             |                       |                       |                      |                       |               |                       |
| Brick, stone or concrete                  | 24                    | 3,966                 | —                    | —                     | 24            | 3,966                 |
| Brick-veneer                              | 592                   | 66,614                | 4                    | 1,080                 | 596           | 67,694                |
| Timber                                    | 21                    | 1,831                 | —                    | —                     | 21            | 1,831                 |
| Fibre cement                              | —                     | —                     | —                    | —                     | —             | —                     |
| Steel, aluminium or other materials       | 3                     | 264                   | —                    | —                     | 3             | 264                   |
| Not stated                                | 299                   | 33,383                | 29                   | 4,732                 | 328           | 38,115                |
| <b>Total houses</b>                       | <b>939</b>            | <b>106,058</b>        | <b>33</b>            | <b>5,812</b>          | <b>972</b>    | <b>111,870</b>        |
| <i>Other residential buildings</i>        | 642                   | 58,625                | 4                    | 230                   | 646           | 58,855                |
| <b>Total residential buildings</b>        | <b>1,581</b>          | <b>164,683</b>        | <b>37</b>            | <b>6,042</b>          | <b>1,618</b>  | <b>170,725</b>        |
| <b>REST OF VICTORIA (b)</b>               |                       |                       |                      |                       |               |                       |
| <b>Houses</b>                             |                       |                       |                      |                       |               |                       |
| Brick, stone or concrete                  | 47                    | 4,856                 | —                    | —                     | 47            | 4,856                 |
| Brick-veneer                              | 197                   | 21,285                | 1                    | 112                   | 198           | 21,397                |
| Timber                                    | 37                    | 3,019                 | —                    | —                     | 37            | 3,019                 |
| Fibre cement                              | 10                    | 522                   | —                    | —                     | 10            | 522                   |
| Steel, aluminium or other materials       | 7                     | 492                   | —                    | —                     | 7             | 492                   |
| Not stated                                | 158                   | 15,827                | —                    | —                     | 158           | 15,827                |
| <b>Total houses</b>                       | <b>456</b>            | <b>46,001</b>         | <b>1</b>             | <b>112</b>            | <b>457</b>    | <b>46,114</b>         |
| <i>Other residential buildings</i>        | 32                    | 2,630                 | 12                   | 734                   | 44            | 3,364                 |
| <b>Total residential buildings</b>        | <b>488</b>            | <b>48,631</b>         | <b>13</b>            | <b>846</b>            | <b>501</b>    | <b>49,478</b>         |
| <b>TOTAL VICTORIA</b>                     |                       |                       |                      |                       |               |                       |
| <b>Houses</b>                             |                       |                       |                      |                       |               |                       |
| Brick, stone or concrete                  | 71                    | 8,822                 | —                    | —                     | 71            | 8,822                 |
| Brick-veneer                              | 789                   | 87,898                | 5                    | 1,192                 | 794           | 89,090                |
| Timber                                    | 58                    | 4,851                 | —                    | —                     | 58            | 4,851                 |
| Fibre cement                              | 10                    | 522                   | —                    | —                     | 10            | 522                   |
| Steel, aluminium or other materials       | 10                    | 756                   | —                    | —                     | 10            | 756                   |
| Not stated                                | 457                   | 49,210                | 29                   | 4,732                 | 486           | 53,942                |
| <b>Total houses</b>                       | <b>1,395</b>          | <b>152,059</b>        | <b>34</b>            | <b>5,924</b>          | <b>1,429</b>  | <b>157,984</b>        |
| <i>Other residential buildings</i>        | 674                   | 61,255                | 16                   | 964                   | 690           | 62,219                |
| <b>Total residential buildings</b>        | <b>2,069</b>          | <b>213,314</b>        | <b>50</b>            | <b>6,888</b>          | <b>2,119</b>  | <b>220,203</b>        |

(a) Excludes Conversions, etc. (b) For details of changes to Statistical Divisions, please refer to paragraphs 28-30 of the Explanatory Notes.

TABLE 8. BUILDING APPROVALS BY STATISTICAL LOCAL AREAS (a), JANUARY 1997

| Statistical Local Area                | New residential buildings (b) |                        |                      |                             |                        |                      | Alterations and additions to residential buildings (\$'000) | Non-residential building (c) |                |                         |
|---------------------------------------|-------------------------------|------------------------|----------------------|-----------------------------|------------------------|----------------------|---|------------------------------|----------------|-------------------------|
|                                       | Houses                        |                        |                      | Other residential buildings |                        |                      |   | Private sector (\$'000)      | Total (\$'000) | Total building (\$'000) |
|                                       | Private sector (number)       | Public sector (number) | Total value (\$'000) | Private sector (number)     | Public sector (number) | Total value (\$'000) |   |                              |                |                         |
| <b>MELBOURNE STATISTICAL DIVISION</b> |                               |                        |                      |                             |                        |                      |   |                              |                |                         |
| Banyule (C)                           |                               |                        |                      |                             |                        |                      |   |                              |                |                         |
| Heidelberg                            | 7                             | 2                      | 1,302                | 14                          | —                      | 813                  | 562   | 500                          | 500            | 3,177                   |
| North                                 | 9                             | —                      | 1,024                | 5                           | —                      | 385                  | 382   | 2,747                        | 2,747          | 4,538                   |
| Total                                 | 16                            | 2                      | 2,327                | 19                          | —                      | 1,198                | 944   | 3,247                        | 3,247          | 7,715                   |
| Bayside (C)                           |                               |                        |                      |                             |                        |                      |   |                              |                |                         |
| Brighton                              | 8                             | —                      | 1,576                | 5                           | —                      | 720                  | 1,440   | 1,520                        | 1,520          | 5,255                   |
| South                                 | 15                            | —                      | 1,883                | 5                           | —                      | 670                  | 2,091   | —                            | —              | 4,645                   |
| Total                                 | 23                            | —                      | 3,459                | 10                          | —                      | 1,390                | 3,531   | 1,520                        | 1,520          | 9,900                   |
| Boroondara (C)                        |                               |                        |                      |                             |                        |                      |   |                              |                |                         |
| Camberwell North                      | 12                            | —                      | 2,437                | —                           | —                      | —                    | 1,402   | 1,686                        | 1,686          | 5,525                   |
| Camberwell South                      | 4                             | —                      | 1,215                | —                           | —                      | —                    | 819   | 8,190                        | 8,190          | 10,224                  |
| Hawthorn                              | 4                             | —                      | 927                  | 6                           | —                      | 600                  | 797   | 780                          | 780            | 3,104                   |
| Kew                                   | 4                             | —                      | 568                  | —                           | —                      | —                    | 695   | —                            | 836            | 2,099                   |
| Total                                 | 24                            | —                      | 5,147                | 6                           | —                      | 600                  | 3,713   | 10,656                       | 11,492         | 20,952                  |
| Brimbank (C)                          |                               |                        |                      |                             |                        |                      |   |                              |                |                         |
| Keilor                                | 49                            | —                      | 5,392                | 153                         | —                      | 7,720                | 133   | 4,360                        | 4,360          | 17,605                  |
| Sunshine                              | 21                            | —                      | 2,124                | 3                           | —                      | 170                  | 249   | 5,370                        | 5,514          | 8,057                   |
| Total                                 | 70                            | —                      | 7,517                | 156                         | —                      | 7,890                | 382   | 9,730                        | 9,874          | 25,662                  |
| Cardinia (S)                          |                               |                        |                      |                             |                        |                      |   |                              |                |                         |
| North                                 | 6                             | —                      | 407                  | —                           | —                      | —                    | 42  | 300                          | 300            | 749                     |
| Pakenham                              | 4                             | —                      | 445                  | —                           | —                      | —                    | 15  | 60                           | 60             | 520                     |
| South                                 | 4                             | —                      | 291                  | —                           | —                      | —                    | —   | —                            | —              | 291                     |
| Total                                 | 14                            | —                      | 1,143                | —                           | —                      | —                    | 56  | 360                          | 360            | 1,560                   |
| Casey (C)                             |                               |                        |                      |                             |                        |                      |   |                              |                |                         |
| Berwick                               | 63                            | —                      | 6,131                | 2                           | —                      | 180                  | 244   | 5,750                        | 5,750          | 12,304                  |
| Cranbourne                            | 21                            | —                      | 1,977                | —                           | —                      | —                    | 260   | —                            | 200            | 2,437                   |
| Hallam                                | 21                            | —                      | 2,933                | —                           | —                      | —                    | 320   | 1,005                        | 2,740          | 5,993                   |
| South                                 | 5                             | —                      | 608                  | —                           | —                      | —                    | 75  | —                            | —              | 684                     |
| Total                                 | 110                           | —                      | 11,649               | 2                           | —                      | 180                  | 899   | 6,755                        | 8,690          | 21,418                  |
| Darebin (C)                           |                               |                        |                      |                             |                        |                      |   |                              |                |                         |
| Northcote                             | 9                             | 2                      | 1,003                | 2                           | —                      | 130                  | 442   | 60                           | 60             | 1,635                   |
| Preston                               | 13                            | —                      | 1,881                | —                           | —                      | —                    | 278   | 5,705                        | 21,544         | 23,703                  |
| Total                                 | 22                            | 2                      | 2,885                | 2                           | —                      | 130                  | 720   | 5,765                        | 21,604         | 25,338                  |
| Frankston (C)                         |                               |                        |                      |                             |                        |                      |   |                              |                |                         |
| East                                  | 29                            | —                      | 2,541                | —                           | —                      | —                    | 261   | —                            | 100            | 2,902                   |
| West                                  | 3                             | —                      | 256                  | —                           | —                      | —                    | 471   | 1,660                        | 1,660          | 2,386                   |
| Total                                 | 32                            | —                      | 2,797                | —                           | —                      | —                    | 732   | 1,660                        | 1,760          | 5,289                   |
| Glen Eira (C)                         |                               |                        |                      |                             |                        |                      |   |                              |                |                         |
| Caulfield                             | 16                            | —                      | 2,072                | 6                           | —                      | 395                  | 1,618   | 706                          | 706            | 4,791                   |
| South                                 | 14                            | —                      | 1,363                | 5                           | —                      | 322                  | 642   | —                            | —              | 2,328                   |
| Total                                 | 30                            | —                      | 3,435                | 11                          | —                      | 717                  | 2,260   | 706                          | 706            | 7,119                   |
| Greater Dandenong (C)                 |                               |                        |                      |                             |                        |                      |   |                              |                |                         |
| Dandenong                             | 10                            | —                      | 983                  | —                           | —                      | —                    | 140   | 6,147                        | 6,147          | 7,270                   |
| Balance                               | 13                            | —                      | 1,110                | —                           | —                      | —                    | 187   | 1,505                        | 1,505          | 2,802                   |
| Total                                 | 23                            | —                      | 2,092                | —                           | —                      | —                    | 327   | 7,652                        | 7,652          | 10,071                  |
| Hobsons Bay (C)                       |                               |                        |                      |                             |                        |                      |   |                              |                |                         |
| Altona                                | 27                            | —                      | 2,683                | 3                           | —                      | 170                  | 241   | 100                          | 100            | 3,194                   |
| Williamstown                          | 5                             | —                      | 752                  | —                           | —                      | —                    | 420   | 130                          | 130            | 1,303                   |
| Total                                 | 32                            | —                      | 3,435                | 3                           | —                      | 170                  | 661   | 230                          | 230            | 4,497                   |
| Hume (C)                              |                               |                        |                      |                             |                        |                      |   |                              |                |                         |
| Broadmeadows                          | 3                             | —                      | 285                  | 8                           | —                      | 370                  | 267   | 1,239                        | 1,239          | 2,161                   |
| Craigieburn                           | 24                            | —                      | 2,388                | —                           | —                      | —                    | 213   | 190                          | 190            | 2,792                   |
| Sunbury                               | 14                            | —                      | 1,514                | —                           | —                      | —                    | 88  | 250                          | 250            | 1,852                   |
| Total                                 | 41                            | —                      | 4,187                | 8                           | —                      | 370                  | 568   | 1,679                        | 1,679          | 6,805                   |
| Kingston (C)                          |                               |                        |                      |                             |                        |                      |   |                              |                |                         |
| North                                 | 12                            | —                      | 1,121                | 6                           | —                      | 500                  | 748   | 21,614                       | 21,994         | 24,362                  |
| South                                 | 24                            | 6                      | 4,952                | 6                           | —                      | 320                  | 478   | —                            | —              | 5,750                   |
| Total                                 | 36                            | 6                      | 6,073                | 12                          | —                      | 820                  | 1,226   | 21,614                       | 21,994         | 30,113                  |

See footnotes at end of table.

TABLE 8. BUILDING APPROVALS BY STATISTICAL LOCAL AREAS (a), JANUARY 1997—continued

| Statistical Local Area                   | New residential buildings (b) |                        |                      |                             |                        |                      | Alterations and additions to residential buildings (\$'000) | Non-residential building (c) |                |                         |
|--|-------------------------------|------------------------|----------------------|-----------------------------|------------------------|----------------------|---|------------------------------|----------------|-------------------------|
|  | Houses                        |                        |                      | Other residential buildings |                        |                      |   | Private sector (\$'000)      | Total (\$'000) | Total building (\$'000) |
|  | Private sector (number)       | Public sector (number) | Total value (\$'000) | Private sector (number)     | Public sector (number) | Total value (\$'000) |   |                              |                |                         |
| MELBOURNE STATISTICAL DIVISION continued |                               |                        |                      |                             |                        |                      |   |                              |                |                         |
| Knox (C)                                 |                               |                        |                      |                             |                        |                      |   |                              |                |                         |
| North                                    | 19                            | 1                      | 2,291                | 9                           | 4                      | 866                  | 880   | 1,128                        | 1,128          | 5,165                   |
| South                                    | 30                            | —                      | 3,476                | —                           | —                      | —                    | 207   | 260                          | 260            | 3,943                   |
| Total                                    | 49                            | 1                      | 5,767                | 9                           | 4                      | 866                  | 1,087   | 1,388                        | 1,388          | 9,108                   |
| Manningham (C)                           |                               |                        |                      |                             |                        |                      |   |                              |                |                         |
| East                                     | 8                             | —                      | 1,427                | —                           | —                      | —                    | 74  | —                            | —              | 1,501                   |
| West                                     | 25                            | —                      | 3,798                | 18                          | —                      | 1,610                | 493   | —                            | 750            | 6,651                   |
| Total                                    | 33                            | —                      | 5,225                | 18                          | —                      | 1,610                | 567   | —                            | 750            | 8,152                   |
| Maribyrnong (C)                          | 17                            | 1                      | 1,915                | 2                           | —                      | 135                  | 613   | 2,699                        | 2,769          | 5,431                   |
| Maroondah (C)                            |                               |                        |                      |                             |                        |                      |   |                              |                |                         |
| Croydon                                  | 15                            | 1                      | 1,540                | —                           | —                      | —                    | 196   | 160                          | 160            | 1,895                   |
| Ringwood                                 | 11                            | 1                      | 1,315                | 5                           | —                      | 250                  | 607   | 500                          | 565            | 2,738                   |
| Total                                    | 26                            | 2                      | 2,855                | 5                           | —                      | 250                  | 803   | 660                          | 725            | 4,633                   |
| Melbourne (C)                            |                               |                        |                      |                             |                        |                      |   |                              |                |                         |
| Inner                                    | —                             | —                      | —                    | 231                         | —                      | 30,000               | 3,000   | 20,150                       | 23,015         | 56,015                  |
| Remainder                                | 2                             | —                      | 240                  | 12                          | —                      | 2,180                | 140   | 3,654                        | 3,654          | 6,214                   |
| Total                                    | 2                             | —                      | 240                  | 243                         | —                      | 32,180               | 3,140   | 23,805                       | 26,669         | 62,229                  |
| Melton (S)                               |                               |                        |                      |                             |                        |                      |   |                              |                |                         |
| East                                     | 1                             | —                      | 65                   | —                           | —                      | —                    | 12  | —                            | —              | 77                      |
| Balance                                  | 2                             | —                      | 120                  | —                           | —                      | —                    | —   | —                            | —              | 120                     |
| Total                                    | 3                             | —                      | 185                  | —                           | —                      | —                    | 12  | —                            | —              | 197                     |
| Monash (C)                               |                               |                        |                      |                             |                        |                      |   |                              |                |                         |
| South-West                               | 7                             | —                      | 478                  | 7                           | —                      | 568                  | 911   | —                            | 144            | 2,101                   |
| Waverley East                            | 4                             | —                      | 585                  | 2                           | —                      | 120                  | 217   | 2,600                        | 2,600          | 3,522                   |
| Waverley West                            | 18                            | —                      | 2,926                | 6                           | —                      | 535                  | 649   | 490                          | 490            | 4,599                   |
| Total                                    | 29                            | —                      | 3,989                | 15                          | —                      | 1,223                | 1,777   | 3,090                        | 3,234          | 10,222                  |
| Moonee Valley (C)                        |                               |                        |                      |                             |                        |                      |   |                              |                |                         |
| Essendon                                 | 8                             | —                      | 1,068                | 36                          | —                      | 2,280                | 1,902   | 690                          | 690            | 5,940                   |
| West                                     | 8                             | —                      | 1,210                | 18                          | —                      | 1,280                | 219   | 937                          | 1,407          | 4,116                   |
| Total                                    | 16                            | —                      | 2,278                | 54                          | —                      | 3,560                | 2,121   | 1,627                        | 2,097          | 10,056                  |
| Moreland (C)                             |                               |                        |                      |                             |                        |                      |   |                              |                |                         |
| Brunswick                                | 5                             | —                      | 241                  | 5                           | —                      | 300                  | 791   | 90                           | 90             | 1,422                   |
| Coburg                                   | 3                             | —                      | 240                  | —                           | —                      | —                    | 252   | —                            | —              | 492                     |
| North                                    | 6                             | —                      | 526                  | 3                           | —                      | 180                  | 336   | —                            | —              | 1,042                   |
| Total                                    | 14                            | —                      | 1,007                | 8                           | —                      | 480                  | 1,378   | 90                           | 90             | 2,955                   |
| Mornington Peninsula (S)                 |                               |                        |                      |                             |                        |                      |   |                              |                |                         |
| East                                     | 9                             | —                      | 936                  | —                           | —                      | —                    | 115   | —                            | 81             | 1,131                   |
| South                                    | 24                            | —                      | 3,109                | —                           | —                      | —                    | 548   | 205                          | 367            | 4,024                   |
| West                                     | 34                            | —                      | 3,300                | —                           | —                      | —                    | 731   | 500                          | 500            | 4,531                   |
| Total                                    | 67                            | —                      | 7,345                | —                           | —                      | —                    | 1,394   | 705                          | 947            | 9,687                   |
| Nillumbik (S)                            |                               |                        |                      |                             |                        |                      |   |                              |                |                         |
| South                                    | 3                             | —                      | 300                  | —                           | —                      | —                    | 214   | —                            | —              | 514                     |
| South-West                               | 1                             | —                      | 75                   | —                           | —                      | —                    | 32  | —                            | —              | 107                     |
| Balance                                  | —                             | —                      | —                    | —                           | —                      | —                    | 25  | —                            | —              | 25                      |
| Total                                    | 4                             | —                      | 375                  | —                           | —                      | —                    | 271   | —                            | —              | 646                     |
| Port Phillip (C)                         |                               |                        |                      |                             |                        |                      |   |                              |                |                         |
| St Kilda                                 | —                             | —                      | —                    | —                           | —                      | —                    | 841   | 181                          | 181            | 1,021                   |
| West                                     | 3                             | 18                     | 2,809                | 7                           | —                      | 1,097                | 512   | 764                          | 764            | 5,181                   |
| Total                                    | 3                             | 18                     | 2,809                | 7                           | —                      | 1,097                | 1,352   | 944                          | 944            | 6,202                   |
| Stonnington (C)                          |                               |                        |                      |                             |                        |                      |   |                              |                |                         |
| Prahan                                   | 6                             | —                      | 1,680                | 8                           | —                      | 901                  | 2,163   | 1,990                        | 2,050          | 6,793                   |
| Malvern                                  | 5                             | —                      | 900                  | —                           | —                      | —                    | 1,757   | 280                          | 280            | 2,937                   |
| Total                                    | 11                            | —                      | 2,580                | 8                           | —                      | 901                  | 3,920   | 2,270                        | 2,330          | 9,730                   |
| Whitehorse (C)                           |                               |                        |                      |                             |                        |                      |   |                              |                |                         |
| Box Hill                                 | 9                             | —                      | 1,454                | 4                           | —                      | 395                  | 1,020   | 65                           | 9,445          | 12,314                  |
| Nunawading East                          | 6                             | —                      | 805                  | 6                           | —                      | 360                  | 189   | 192                          | 192            | 1,546                   |
| Nunawading West                          | 13                            | —                      | 1,426                | 4                           | —                      | 305                  | 418   | 9,810                        | 9,950          | 12,100                  |
| Total                                    | 28                            | —                      | 3,686                | 14                          | —                      | 1,060                | 1,627   | 10,067                       | 19,587         | 25,960                  |

See footnotes at end of table.

TABLE 8. BUILDING APPROVALS BY STATISTICAL LOCAL AREAS (a), JANUARY 1997—continued

| Statistical Local Area                            | New residential buildings (b) |                        |                      |                             |                        |                      | Alterations and additions to residential buildings (\$'000) | Non-residential building (c) |                |                         |
|---|-------------------------------|------------------------|----------------------|-----------------------------|------------------------|----------------------|---|------------------------------|----------------|-------------------------|
|   | Houses                        |                        |                      | Other residential buildings |                        |                      |   | Private sector (\$'000)      | Total (\$'000) | Total building (\$'000) |
|   | Private sector (number)       | Public sector (number) | Total value (\$'000) | Private sector (number)     | Public sector (number) | Total value (\$'000) |   |                              |                |                         |
| <b>MELBOURNE STATISTICAL DIVISION — continued</b> |                               |                        |                      |                             |                        |                      |   |                              |                |                         |
| Whittlesea (C)                                    |                               |                        |                      |                             |                        |                      |   |                              |                |                         |
| North   | 20                            | —                      | 2,047                | —                           | —                      | —                    | —   | 80                           | 80             | 2,127                   |
| South   | 68                            | —                      | 5,645                | 15                          | —                      | 900                  | 300   | 15,699                       | 15,699         | 22,544                  |
| Total   | 88                            | —                      | 7,693                | 15                          | —                      | 900                  | 300   | 15,779                       | 15,779         | 24,672                  |
| Wyndham (C)                                       |                               |                        |                      |                             |                        |                      |   |                              |                |                         |
| North-East  | 2                             | —                      | 159                  | —                           | —                      | —                    | 19  | —                            | —              | 178                     |
| Werribee  | 43                            | —                      | 4,068                | 2                           | —                      | 100                  | 198   | 836                          | 836            | 5,201                   |
| Balance   | 2                             | —                      | 129                  | —                           | —                      | —                    | 70  | 28,735                       | 29,085         | 29,285                  |
| Total   | 47                            | —                      | 4,356                | 2                           | —                      | 100                  | 287   | 29,571                       | 29,921         | 34,664                  |
| Yarra (C)   |                               |                        |                      |                             |                        |                      |   |                              |                |                         |
| North   | 2                             | —                      | 420                  | —                           | —                      | —                    | 1,096   | 750                          | 750            | 2,266                   |
| Richmond  | 2                             | —                      | 175                  | 8                           | —                      | 730                  | 423   | 630                          | 630            | 1,958                   |
| Total   | 4                             | —                      | 595                  | 8                           | —                      | 730                  | 1,518   | 1,380                        | 1,380          | 4,223                   |
| Yarra Ranges (S) — Pt A (d)                       |                               |                        |                      |                             |                        |                      |   |                              |                |                         |
| Central   | 2                             | —                      | 149                  | —                           | —                      | —                    | 101   | 100                          | 100            | 350                     |
| North   | 3                             | —                      | 156                  | —                           | —                      | —                    | 12  | 250                          | 250            | 418                     |
| South-West  | 20                            | 1                      | 2,520                | 5                           | —                      | 300                  | 1,390   | 3,760                        | 3,895          | 8,105                   |
| Total   | 25                            | 1                      | 2,825                | 5                           | —                      | 300                  | 1,503   | 4,110                        | 4,245          | 8,872                   |
| <b>Melbourne (SD)</b>                             | <b>939</b>                    | <b>33</b>              | <b>111,870</b>       | <b>642</b>                  | <b>4</b>               | <b>58,855</b>        | <b>39,689</b>   | <b>169,759</b>               | <b>203,663</b> | <b>414,076</b>          |
| <b>BARWON STATISTICAL DIVISION</b>                |                               |                        |                      |                             |                        |                      |   |                              |                |                         |
| Colac-Otway (S)                                   |                               |                        |                      |                             |                        |                      |   |                              |                |                         |
| Colac   | 2                             | —                      | 174                  | —                           | —                      | —                    | 21  | —                            | —              | 195                     |
| North   | —                             | —                      | —                    | —                           | —                      | —                    | 20  | —                            | —              | 20                      |
| South   | 1                             | —                      | 21                   | —                           | —                      | —                    | 114   | 80                           | 80             | 215                     |
| Total   | 3                             | —                      | 195                  | —                           | —                      | —                    | 155   | 80                           | 80             | 430                     |
| Golden Plains (S)                                 |                               |                        |                      |                             |                        |                      |   |                              |                |                         |
| North-West  | 3                             | —                      | 156                  | —                           | —                      | —                    | 20  | —                            | —              | 176                     |
| South-East  | 3                             | —                      | 425                  | —                           | —                      | —                    | 112   | —                            | —              | 537                     |
| Total   | 6                             | —                      | 581                  | —                           | —                      | —                    | 132   | —                            | —              | 713                     |
| Greater Geelong (C)                               |                               |                        |                      |                             |                        |                      |   |                              |                |                         |
| Part A  |                               |                        |                      |                             |                        |                      |   |                              |                |                         |
| Bellarine - Inner                                 | 9                             | —                      | 874                  | —                           | —                      | —                    | 207   | 250                          | 250            | 1,331                   |
| Corio - Inner                                     | 25                            | —                      | 2,222                | —                           | —                      | —                    | 154   | 790                          | 870            | 3,246                   |
| Geelong   | 2                             | —                      | 144                  | —                           | —                      | —                    | 702   | 530                          | 747            | 1,593                   |
| Geelong West                                      | —                             | —                      | —                    | 2                           | —                      | 100                  | 218   | 140                          | 140            | 458                     |
| Newtown   | 1                             | —                      | 90                   | —                           | —                      | —                    | 289   | 150                          | 150            | 529                     |
| South Barwon — Inner                              | 15                            | —                      | 2,053                | —                           | —                      | —                    | 200   | 90                           | 748            | 3,001                   |
| Part B  | 15                            | —                      | 1,486                | —                           | —                      | —                    | 480   | 80                           | 80             | 2,046                   |
| Part C  | —                             | —                      | —                    | —                           | —                      | —                    | —   | —                            | —              | —                       |
| Total   | 67                            | —                      | 6,869                | 2                           | —                      | 100                  | 2,250   | 2,030                        | 2,985          | 12,203                  |
| Queenscliffe (B)                                  | 2                             | —                      | 420                  | —                           | —                      | —                    | 79  | 100                          | 100            | 599                     |
| Surf Coast (S)                                    |                               |                        |                      |                             |                        |                      |   |                              |                |                         |
| East  | 9                             | —                      | 884                  | —                           | —                      | —                    | 137   | 200                          | 200            | 1,221                   |
| West  | 8                             | —                      | 736                  | —                           | —                      | —                    | 265   | —                            | —              | 1,001                   |
| Total   | 17                            | —                      | 1,620                | —                           | —                      | —                    | 401   | 200                          | 200            | 2,222                   |
| <b>Barwon (SD)</b>                                | <b>95</b>                     | <b>—</b>               | <b>9,686</b>         | <b>2</b>                    | <b>—</b>               | <b>100</b>           | <b>3,017</b>  | <b>2,410</b>                 | <b>3,365</b>   | <b>16,168</b>           |

See footnotes at end of table.

TABLE 8. BUILDING APPROVALS BY STATISTICAL LOCAL AREAS (a), JANUARY 1997—continued

| Statistical Local Area                        | New residential buildings (b) |                        |                      |                             |                        |                      | Alterations and additions to residential buildings (\$'000) | Non-residential building (c) |                |                         |
|---|-------------------------------|------------------------|----------------------|-----------------------------|------------------------|----------------------|---|------------------------------|----------------|-------------------------|
|   | Houses                        |                        |                      | Other residential buildings |                        |                      |   | Private sector (\$'000)      | Total (\$'000) | Total building (\$'000) |
|   | Private sector (number)       | Public sector (number) | Total value (\$'000) | Private sector (number)     | Public sector (number) | Total value (\$'000) |   |                              |                |                         |
| <b>WESTERN DISTRICT STATISTICAL DIVISION</b>  |                               |                        |                      |                             |                        |                      |   |                              |                |                         |
| Corangamite (S)                               |                               |                        |                      |                             |                        |                      |   |                              |                |                         |
| North   | 3                             | —                      | 410                  | —                           | —                      | —                    | 339   | 130                          | 130            | 879                     |
| South   | 3                             | —                      | 168                  | —                           | —                      | —                    | 88  | —                            | —              | 256                     |
| Total   | 6                             | —                      | 578                  | —                           | —                      | —                    | 427   | 130                          | 130            | 1,135                   |
| Glenelg (S)                                   |                               |                        |                      |                             |                        |                      |   |                              |                |                         |
| Heywood                                       | 1                             | —                      | 150                  | —                           | —                      | —                    | 20  | 75                           | 75             | 245                     |
| North   | —                             | —                      | —                    | —                           | —                      | —                    | 43  | —                            | —              | 43                      |
| Portland                                      | 3                             | —                      | 265                  | —                           | —                      | —                    | 111   | —                            | —              | 376                     |
| Total   | 4                             | —                      | 415                  | —                           | —                      | —                    | 174   | 75                           | 75             | 664                     |
| Moyne (S)                                     |                               |                        |                      |                             |                        |                      |   |                              |                |                         |
| North-East                                    | —                             | —                      | —                    | —                           | —                      | —                    | —   | 86                           | 86             | 86                      |
| North-West                                    | —                             | —                      | —                    | —                           | —                      | —                    | 56  | —                            | —              | 56                      |
| South   | 5                             | —                      | 462                  | —                           | —                      | —                    | 18  | —                            | —              | 479                     |
| Total   | 5                             | —                      | 462                  | —                           | —                      | —                    | 73  | 86                           | 86             | 621                     |
| Southern Grampians (S)                        |                               |                        |                      |                             |                        |                      |   |                              |                |                         |
| Hamilton                                      | 2                             | —                      | 152                  | —                           | —                      | —                    | 80  | 53                           | 53             | 285                     |
| Wannon  | —                             | —                      | —                    | —                           | —                      | —                    | —   | —                            | —              | —                       |
| Balance                                       | 1                             | —                      | 94                   | —                           | —                      | —                    | 35  | —                            | —              | 129                     |
| Total   | 3                             | —                      | 246                  | —                           | —                      | —                    | 115   | 53                           | 53             | 414                     |
| Warnambool (C)                                | 12                            | —                      | 1,193                | —                           | —                      | —                    | 257   | 7,635                        | 7,635          | 9,085                   |
| Lady Julia Percy Island                       | —                             | —                      | —                    | —                           | —                      | —                    | —   | —                            | —              | —                       |
| <b>Western District (SD)</b>                  | <b>30</b>                     | <b>—</b>               | <b>2,893</b>         | <b>—</b>                    | <b>—</b>               | <b>—</b>             | <b>1,047</b>  | <b>7,980</b>                 | <b>7,980</b>   | <b>11,919</b>           |
| <b>CENTRAL HIGHLANDS STATISTICAL DIVISION</b> |                               |                        |                      |                             |                        |                      |   |                              |                |                         |
| Ararat (RC)                                   | 1                             | —                      | 85                   | —                           | —                      | —                    | 65  | —                            | —              | 150                     |
| Ballarat (C)                                  |                               |                        |                      |                             |                        |                      |   |                              |                |                         |
| Central                                       | 9                             | —                      | 1,028                | 6                           | 12                     | 1,198                | 433   | 630                          | 630            | 3,289                   |
| Inner North                                   | 8                             | —                      | 848                  | 10                          | —                      | 485                  | 207   | 57                           | 57             | 1,596                   |
| North   | —                             | —                      | —                    | —                           | —                      | —                    | 52  | 62                           | 62             | 114                     |
| South   | 3                             | —                      | 325                  | —                           | —                      | —                    | 63  | —                            | 1,000          | 1,388                   |
| Total   | 20                            | —                      | 2,201                | 16                          | 12                     | 1,683                | 755   | 749                          | 1,749          | 6,387                   |
| Hepburn (S)                                   |                               |                        |                      |                             |                        |                      |   |                              |                |                         |
| East  | 3                             | —                      | 384                  | —                           | —                      | —                    | 42  | 300                          | 300            | 726                     |
| West  | 2                             | —                      | 155                  | —                           | —                      | —                    | 58  | —                            | —              | 213                     |
| Total   | 5                             | —                      | 539                  | —                           | —                      | —                    | 100   | 300                          | 300            | 939                     |
| Moorabool (S)                                 |                               |                        |                      |                             |                        |                      |   |                              |                |                         |
| Bacchus Marsh                                 | 5                             | —                      | 394                  | —                           | —                      | —                    | 134   | —                            | —              | 527                     |
| Ballan  | 7                             | —                      | 867                  | —                           | —                      | —                    | 31  | —                            | —              | 898                     |
| West  | 2                             | —                      | 137                  | —                           | —                      | —                    | 15  | —                            | —              | 152                     |
| Total   | 14                            | —                      | 1,398                | —                           | —                      | —                    | 180   | —                            | —              | 1,578                   |
| Pyrenees (S)                                  |                               |                        |                      |                             |                        |                      |   |                              |                |                         |
| North   | 2                             | —                      | 170                  | —                           | —                      | —                    | —   | —                            | —              | 170                     |
| South   | 1                             | —                      | 45                   | —                           | —                      | —                    | —   | —                            | —              | 45                      |
| Total   | 3                             | —                      | 215                  | —                           | —                      | —                    | —   | —                            | —              | 215                     |
| <b>Central Highlands (SD)</b>                 | <b>43</b>                     | <b>—</b>               | <b>4,438</b>         | <b>16</b>                   | <b>12</b>              | <b>1,683</b>         | <b>1,100</b>  | <b>1,049</b>                 | <b>2,049</b>   | <b>9,269</b>            |

TABLE 8. BUILDING APPROVALS BY STATISTICAL LOCAL AREAS (a), JANUARY 1997—continued

| Statistical Local Area              | New residential buildings (b) |                        |                      |                             |                        |                      | Alterations and additions to residential buildings (\$'000) | Non-residential building (c) |                |                         |
|-------------------------------------|-------------------------------|------------------------|----------------------|-----------------------------|------------------------|----------------------|---|------------------------------|----------------|-------------------------|
|                                     | Houses                        |                        |                      | Other residential buildings |                        |                      |   | Private sector (\$'000)      | Total (\$'000) | Total building (\$'000) |
|                                     | Private sector (number)       | Public sector (number) | Total value (\$'000) | Private sector (number)     | Public sector (number) | Total value (\$'000) |   |                              |                |                         |
| <b>WIMMERA STATISTICAL DIVISION</b> |                               |                        |                      |                             |                        |                      |   |                              |                |                         |
| Hindmarsh (S)                       | 5                             | —                      | 693                  | —                           | —                      | —                    | —   | —                            | —              | 693                     |
| Horsham (RC)                        |                               |                        |                      |                             |                        |                      |   |                              |                |                         |
| Central                             | 2                             | —                      | 213                  | —                           | —                      | —                    | 18  | 218                          | 630            | 861                     |
| Balance                             | 2                             | —                      | 171                  | —                           | —                      | —                    | 10  | —                            | —              | 181                     |
| Total                               | 4                             | —                      | 384                  | —                           | —                      | —                    | 28  | 218                          | 630            | 1,042                   |
| Northern Grampians (S)              |                               |                        |                      |                             |                        |                      |   |                              |                |                         |
| St Arnaud                           | —                             | —                      | —                    | —                           | —                      | —                    | —   | —                            | —              | —                       |
| Stawell                             | 3                             | —                      | 315                  | —                           | —                      | —                    | —   | —                            | —              | 315                     |
| Total                               | 3                             | —                      | 315                  | —                           | —                      | —                    | —   | —                            | —              | 315                     |
| West Wimmera (S)                    | 1                             | —                      | 115                  | —                           | —                      | —                    | 55  | —                            | —              | 170                     |
| Yarriambiack (S)                    |                               |                        |                      |                             |                        |                      |   |                              |                |                         |
| North                               | —                             | —                      | —                    | —                           | —                      | —                    | 46  | —                            | —              | 46                      |
| South                               | —                             | —                      | —                    | —                           | —                      | —                    | 15  | —                            | —              | 15                      |
| Total                               | —                             | —                      | —                    | —                           | —                      | —                    | 61  | —                            | —              | 61                      |
| <b>Wimmera (SD)</b>                 | <b>13</b>                     | <b>—</b>               | <b>1,507</b>         | <b>—</b>                    | <b>—</b>               | <b>—</b>             | <b>144</b>  | <b>218</b>                   | <b>630</b>     | <b>2,281</b>            |
| <b>MALLEE STATISTICAL DIVISION</b>  |                               |                        |                      |                             |                        |                      |   |                              |                |                         |
| Buloke (S)                          |                               |                        |                      |                             |                        |                      |   |                              |                |                         |
| North                               | —                             | —                      | —                    | —                           | —                      | —                    | 26  | 345                          | 345            | 371                     |
| South                               | 2                             | —                      | 42                   | —                           | —                      | —                    | 114   | 73                           | 73             | 228                     |
| Total                               | 2                             | —                      | 42                   | —                           | —                      | —                    | 139   | 418                          | 418            | 599                     |
| Gannawarra (S)                      | 3                             | —                      | 300                  | —                           | —                      | —                    | 116   | 70                           | 70             | 486                     |
| Mildura (RC)                        |                               |                        |                      |                             |                        |                      |   |                              |                |                         |
| Pt A                                | 19                            | —                      | 2,091                | —                           | —                      | —                    | 122   | 620                          | 1,220          | 3,433                   |
| Pt B                                | 1                             | —                      | 110                  | —                           | —                      | —                    | —   | —                            | —              | 110                     |
| Total                               | 20                            | —                      | 2,201                | —                           | —                      | —                    | 122   | 620                          | 1,220          | 3,543                   |
| Swan Hill (RC)                      |                               |                        |                      |                             |                        |                      |   |                              |                |                         |
| Central                             | —                             | —                      | —                    | —                           | —                      | —                    | 130   | 144                          | 144            | 274                     |
| Robinvale                           | 1                             | —                      | 204                  | —                           | —                      | —                    | —   | —                            | —              | 204                     |
| Balance                             | —                             | —                      | —                    | —                           | —                      | —                    | 11  | —                            | —              | 11                      |
| Total                               | 1                             | —                      | 204                  | —                           | —                      | —                    | 141   | 144                          | 144            | 488                     |
| <b>Mallee (SD)</b>                  | <b>26</b>                     | <b>—</b>               | <b>2,747</b>         | <b>—</b>                    | <b>—</b>               | <b>—</b>             | <b>518</b>  | <b>1,252</b>                 | <b>1,852</b>   | <b>5,117</b>            |

See footnotes at end of table.

TABLE 8. BUILDING APPROVALS BY STATISTICAL LOCAL AREAS (a), JANUARY 1997—continued

| Statistical Local Area             | New residential buildings (b) |                        |                      |                             |                        |                      | Non-residential building (c)                                |                              |                |                         |
|------------------------------------|-------------------------------|------------------------|----------------------|-----------------------------|------------------------|----------------------|---|------------------------------|----------------|-------------------------|
|                                    | Houses                        |                        |                      | Other residential buildings |                        |                      | Alterations and additions to residential buildings (\$'000) | Non-residential building (c) |                |                         |
|                                    | Private sector (number)       | Public sector (number) | Total value (\$'000) | Private sector (number)     | Public sector (number) | Total value (\$'000) |   | Private sector (\$'000)      | Total (\$'000) | Total building (\$'000) |
| <b>LODDON STATISTICAL DIVISION</b> |                               |                        |                      |                             |                        |                      |   |                              |                |                         |
| Central Goldfields (S)             |                               |                        |                      |                             |                        |                      |   |                              |                |                         |
| Maryborough                        | 3                             | —                      | 231                  | —                           | —                      | —                    | 19  | —                            | —              | 250                     |
| Balance                            | —                             | —                      | —                    | —                           | —                      | —                    | 50  | —                            | —              | 50                      |
| Total                              | 3                             | —                      | 231                  | —                           | —                      | —                    | 69  | —                            | —              | 300                     |
| Greater Bendigo (C)                |                               |                        |                      |                             |                        |                      |   |                              |                |                         |
| Part A                             |                               |                        |                      |                             |                        |                      |   |                              |                |                         |
| Central                            | 5                             | —                      | 643                  | —                           | —                      | —                    | 182   | —                            | 50             | 875                     |
| Eaglehawk                          | 3                             | —                      | 474                  | —                           | —                      | —                    | —   | 60                           | 60             | 534                     |
| Inner East                         | 7                             | —                      | 714                  | —                           | —                      | —                    | 101   | —                            | —              | 815                     |
| Inner North                        | 3                             | —                      | 334                  | —                           | —                      | —                    | —   | —                            | —              | 334                     |
| Inner West                         | 8                             | —                      | 729                  | —                           | —                      | —                    | 359   | 130                          | 130            | 1,217                   |
| Strathfieldsaye                    | 4                             | —                      | 231                  | —                           | —                      | —                    | 46  | —                            | —              | 277                     |
| Part B                             | 8                             | —                      | 941                  | —                           | —                      | —                    | 78  | —                            | —              | 1,019                   |
| Total                              | 38                            | —                      | 4,065                | —                           | —                      | —                    | 766   | 190                          | 240            | 5,071                   |
| Loddon (S)                         |                               |                        |                      |                             |                        |                      |   |                              |                |                         |
| North                              | —                             | —                      | —                    | —                           | —                      | —                    | —   | —                            | —              | —                       |
| South                              | —                             | —                      | —                    | —                           | —                      | —                    | —   | —                            | —              | —                       |
| Total                              | —                             | —                      | —                    | —                           | —                      | —                    | —   | —                            | —              | —                       |
| Macedon Ranges (S)                 |                               |                        |                      |                             |                        |                      |   |                              |                |                         |
| Kyneton                            | 2                             | —                      | 222                  | —                           | —                      | —                    | —   | —                            | 300            | 522                     |
| Romsey                             | 2                             | —                      | 245                  | —                           | —                      | —                    | 63  | —                            | —              | 308                     |
| Balance                            | 10                            | —                      | 1,325                | —                           | —                      | —                    | 432   | —                            | —              | 1,757                   |
| Total                              | 14                            | —                      | 1,792                | —                           | —                      | —                    | 495   | —                            | 300            | 2,587                   |
| Mount Alexander (S)                |                               |                        |                      |                             |                        |                      |   |                              |                |                         |
| Castlemaine                        | —                             | —                      | —                    | —                           | —                      | —                    | —   | —                            | —              | —                       |
| Balance                            | 3                             | —                      | 261                  | —                           | —                      | —                    | 15  | —                            | 51             | 327                     |
| Total                              | 3                             | —                      | 261                  | —                           | —                      | —                    | 15  | —                            | 51             | 327                     |
| <b>Loddon-Campaspe (SD)</b>        | <b>58</b>                     | <b>—</b>               | <b>6,349</b>         | <b>—</b>                    | <b>—</b>               | <b>—</b>             | <b>1,345</b>  | <b>190</b>                   | <b>591</b>     | <b>8,284</b>            |

See footnotes at end of table.

TABLE 8. BUILDING APPROVALS BY STATISTICAL LOCAL AREAS (a), JANUARY 1997—continued

| Statistical Local Area                   | New residential buildings (b) |                        |                      |                             |                        |                      | Alterations and additions to residential buildings (\$'000) | Non-residential building (c) |                |                         |
|--|-------------------------------|------------------------|----------------------|-----------------------------|------------------------|----------------------|---|------------------------------|----------------|-------------------------|
|  | Houses                        |                        |                      | Other residential buildings |                        |                      |   | Private sector (\$'000)      | Total (\$'000) | Total building (\$'000) |
|  | Private sector (number)       | Public sector (number) | Total value (\$'000) | Private sector (number)     | Public sector (number) | Total value (\$'000) |   |                              |                |                         |
| <b>GOULBURN STATISTICAL DIVISION</b>     |                               |                        |                      |                             |                        |                      |   |                              |                |                         |
| Campaspe (S)                             |                               |                        |                      |                             |                        |                      |   |                              |                |                         |
| Echuca                                   | 7                             | —                      | 541                  | —                           | —                      | —                    | 50  | 160                          | 160            | 751                     |
| Kyabram                                  | 6                             | —                      | 664                  | —                           | —                      | —                    | 120   | 583                          | 583            | 1,367                   |
| Rochester                                | 7                             | —                      | 676                  | —                           | —                      | —                    | 271   | —                            | —              | 947                     |
| South                                    | 1                             | —                      | 90                   | —                           | —                      | —                    | 18  | —                            | —              | 108                     |
| Total                                    | 21                            | —                      | 1,971                | —                           | —                      | —                    | 459   | 743                          | 743            | 3,172                   |
| Delatite (S)                             |                               |                        |                      |                             |                        |                      |   |                              |                |                         |
| Benalla                                  | 1                             | —                      | 100                  | —                           | —                      | —                    | —   | —                            | —              | 100                     |
| North                                    | 1                             | —                      | 70                   | —                           | —                      | —                    | 81  | —                            | —              | 151                     |
| South                                    | 2                             | —                      | 205                  | —                           | —                      | —                    | 45  | 705                          | 705            | 955                     |
| Total                                    | 4                             | —                      | 375                  | —                           | —                      | —                    | 126   | 705                          | 705            | 1,206                   |
| Greater Shepparton (C)                   |                               |                        |                      |                             |                        |                      |   |                              |                |                         |
| Part A                                   | 6                             | —                      | 763                  | —                           | —                      | —                    | 198   | 455                          | 455            | 1,416                   |
| Part B                                   |                               |                        |                      |                             |                        |                      |   |                              |                |                         |
| East                                     | 6                             | —                      | 738                  | —                           | —                      | —                    | —   | —                            | —              | 738                     |
| West                                     | 2                             | —                      | 240                  | —                           | —                      | —                    | —   | 115                          | 115            | 355                     |
| Total                                    | 14                            | —                      | 1,742                | —                           | —                      | —                    | 198   | 570                          | 570            | 2,509                   |
| Mitchell (S)                             |                               |                        |                      |                             |                        |                      |   |                              |                |                         |
| North                                    | 3                             | —                      | 298                  | —                           | —                      | —                    | 93  | —                            | —              | 391                     |
| South                                    | 9                             | —                      | 630                  | —                           | —                      | —                    | 10  | —                            | —              | 640                     |
| Total                                    | 12                            | —                      | 929                  | —                           | —                      | —                    | 103   | —                            | —              | 1,032                   |
| Moira (S)                                |                               |                        |                      |                             |                        |                      |   |                              |                |                         |
| East                                     | 2                             | —                      | 217                  | —                           | —                      | —                    | 38  | 50                           | 50             | 305                     |
| West                                     | 5                             | —                      | 491                  | —                           | —                      | —                    | 64  | 200                          | 200            | 755                     |
| Total                                    | 7                             | —                      | 708                  | —                           | —                      | —                    | 102   | 250                          | 250            | 1,060                   |
| Murrindindi (S)                          |                               |                        |                      |                             |                        |                      |   |                              |                |                         |
| East                                     | 3                             | —                      | 246                  | —                           | —                      | —                    | 60  | —                            | —              | 306                     |
| West                                     | 2                             | —                      | 120                  | —                           | —                      | —                    | 50  | —                            | —              | 170                     |
| Total                                    | 5                             | —                      | 366                  | —                           | —                      | —                    | 110   | —                            | —              | 476                     |
| Strathbogie (S)                          | 2                             | —                      | 175                  | —                           | —                      | —                    | —   | —                            | —              | 175                     |
| <b>Goulburn (SD)</b>                     | <b>65</b>                     | <b>—</b>               | <b>6,265</b>         | <b>—</b>                    | <b>—</b>               | <b>—</b>             | <b>1,097</b>  | <b>2,268</b>                 | <b>2,268</b>   | <b>9,630</b>            |
| <b>OVENS-MURRAY STATISTICAL DIVISION</b> |                               |                        |                      |                             |                        |                      |   |                              |                |                         |
| Alpine (S)                               |                               |                        |                      |                             |                        |                      |   |                              |                |                         |
| East                                     | 8                             | —                      | 1,238                | 6                           | —                      | 1,140                | 128   | 265                          | 860            | 3,366                   |
| West                                     | 1                             | —                      | 117                  | —                           | —                      | —                    | 30  | 250                          | 250            | 398                     |
| Total                                    | 9                             | —                      | 1,355                | 6                           | —                      | 1,140                | 159   | 515                          | 1,110          | 3,764                   |
| Indigo (S)                               |                               |                        |                      |                             |                        |                      |   |                              |                |                         |
| Part A                                   | 1                             | —                      | 104                  | —                           | —                      | —                    | —   | —                            | —              | 104                     |
| Part B                                   | —                             | —                      | —                    | —                           | —                      | —                    | —   | —                            | —              | —                       |
| Total                                    | 1                             | —                      | 104                  | —                           | —                      | —                    | —   | —                            | —              | 104                     |
| Wangaratta (RC)                          |                               |                        |                      |                             |                        |                      |   |                              |                |                         |
| Central                                  | 7                             | —                      | 685                  | 2                           | —                      | 111                  | 10  | 450                          | 450            | 1,256                   |
| North                                    | 3                             | —                      | 270                  | —                           | —                      | —                    | 12  | 50                           | 50             | 331                     |
| South                                    | 1                             | —                      | 90                   | —                           | —                      | —                    | 24  | —                            | —              | 114                     |
| Total                                    | 11                            | —                      | 1,045                | 2                           | —                      | 111                  | 46  | 500                          | 500            | 1,702                   |
| Towong (S)                               |                               |                        |                      |                             |                        |                      |   |                              |                |                         |
| Part A                                   | —                             | —                      | —                    | —                           | —                      | —                    | —   | —                            | —              | —                       |
| Part B                                   | —                             | —                      | —                    | —                           | —                      | —                    | —   | —                            | —              | —                       |
| Total                                    | —                             | —                      | —                    | —                           | —                      | —                    | —   | —                            | —              | —                       |
| Wodonga (RC)                             | 12                            | —                      | 1,052                | —                           | —                      | —                    | 726   | 1,071                        | 1,071          | 2,849                   |
| <b>Ovens-Murray (SD)</b>                 | <b>33</b>                     | <b>—</b>               | <b>3,556</b>         | <b>8</b>                    | <b>—</b>               | <b>1,251</b>         | <b>930</b>  | <b>2,086</b>                 | <b>2,681</b>   | <b>8,418</b>            |

See footnotes at end of table.



TABLE 8. BUILDING APPROVALS BY STATISTICAL LOCAL AREAS (a), JANUARY 1997—continued

| Statistical Local Area                     | New residential buildings (b) |                        |                      |                             |                        |                      | Non-residential building (c)                                |                              |                |                         |
|--|-------------------------------|------------------------|----------------------|-----------------------------|------------------------|----------------------|---|------------------------------|----------------|-------------------------|
|  | Houses                        |                        |                      | Other residential buildings |                        |                      | Alterations and additions to residential buildings (\$'000) | Non-residential building (c) |                |                         |
|  | Private sector (number)       | Public sector (number) | Total value (\$'000) | Private sector (number)     | Public sector (number) | Total value (\$'000) |   | Private sector (\$'000)      | Total (\$'000) | Total building (\$'000) |
| <b>EAST GIPPSLAND STATISTICAL DIVISION</b> |                               |                        |                      |                             |                        |                      |   |                              |                |                         |
| East Gippsland (S)                         |                               |                        |                      |                             |                        |                      |   |                              |                |                         |
| Bairnsdale                                 | 14                            | —                      | 1,588                | 2                           | —                      | 130                  | 174   | 80                           | 80             | 1,972                   |
| Orbost                                     | 1                             | —                      | 90                   | —                           | —                      | —                    | 21  | —                            | —              | 111                     |
| South-West                                 | 2                             | —                      | 210                  | —                           | —                      | —                    | 11  | —                            | —              | 221                     |
| Balance                                    | 1                             | —                      | 80                   | —                           | —                      | —                    | —   | —                            | —              | 80                      |
| Total                                      | 18                            | —                      | 1,968                | 2                           | —                      | 130                  | 206   | 80                           | 80             | 2,384                   |
| Wellington (S)                             |                               |                        |                      |                             |                        |                      |   |                              |                |                         |
| Alberton                                   | 2                             | —                      | 244                  | —                           | —                      | —                    | 135   | —                            | —              | 378                     |
| Avon                                       | 1                             | —                      | 100                  | —                           | —                      | —                    | —   | —                            | —              | 100                     |
| Maffra                                     | 2                             | —                      | 168                  | —                           | —                      | —                    | 69  | 60                           | 60             | 297                     |
| Rosedale                                   | 6                             | —                      | 341                  | —                           | —                      | —                    | 110   | 69                           | 69             | 520                     |
| Sale                                       | 8                             | 1                      | 1,033                | —                           | —                      | —                    | 307   | —                            | —              | 1,340                   |
| Total                                      | 19                            | 1                      | 1,886                | —                           | —                      | —                    | 621   | 129                          | 129            | 2,635                   |
| <b>East Gippsland (SD)</b>                 | <b>37</b>                     | <b>1</b>               | <b>3,854</b>         | <b>2</b>                    | <b>—</b>               | <b>130</b>           | <b>826</b>  | <b>209</b>                   | <b>209</b>     | <b>5,019</b>            |
| <b>GIPPSLAND STATISTICAL DIVISION</b>      |                               |                        |                      |                             |                        |                      |   |                              |                |                         |
| Bass Coast (S)                             |                               |                        |                      |                             |                        |                      |   |                              |                |                         |
| Phillip Island                             | 12                            | —                      | 992                  | —                           | —                      | —                    | 201   | 100                          | 100            | 1,292                   |
| Balance                                    | 13                            | —                      | 1,061                | —                           | —                      | —                    | 225   | 430                          | 430            | 1,715                   |
| Total                                      | 25                            | —                      | 2,052                | —                           | —                      | —                    | 425   | 530                          | 530            | 3,008                   |
| Baw Baw (S)                                |                               |                        |                      |                             |                        |                      |   |                              |                |                         |
| Part A                                     | —                             | —                      | —                    | —                           | —                      | —                    | 66  | —                            | —              | 66                      |
| Part B                                     |                               |                        |                      |                             |                        |                      |   |                              |                |                         |
| East                                       | 1                             | —                      | 184                  | —                           | —                      | —                    | 117   | —                            | —              | 301                     |
| West                                       | 11                            | —                      | 936                  | —                           | —                      | —                    | 115   | 420                          | 420            | 1,471                   |
| Total                                      | 12                            | —                      | 1,120                | —                           | —                      | —                    | 297   | 420                          | 420            | 1,838                   |
| La Trobe (S)                               |                               |                        |                      |                             |                        |                      |   |                              |                |                         |
| Moe  | 1                             | —                      | 47                   | 2                           | —                      | 80                   | 55  | —                            | —              | 182                     |
| Morwell                                    | 1                             | —                      | 109                  | —                           | —                      | —                    | 38  | 57                           | 427            | 573                     |
| Traralgon                                  | 8                             | —                      | 786                  | 2                           | —                      | 120                  | 272   | 230                          | 230            | 1,408                   |
| Balance                                    | —                             | —                      | —                    | —                           | —                      | —                    | —   | —                            | —              | —                       |
| Total                                      | 10                            | —                      | 941                  | 4                           | —                      | 200                  | 364   | 287                          | 657            | 2,162                   |
| South Gippsland (S)                        |                               |                        |                      |                             |                        |                      |   |                              |                |                         |
| Central                                    | 5                             | —                      | 457                  | —                           | —                      | —                    | 35  | —                            | —              | 492                     |
| East                                       | 3                             | —                      | 191                  | —                           | —                      | —                    | 35  | 165                          | 165            | 391                     |
| West                                       | 1                             | —                      | 57                   | —                           | —                      | —                    | 49  | 1,090                        | 1,090          | 1,196                   |
| Total                                      | 9                             | —                      | 705                  | —                           | —                      | —                    | 119   | 1,255                        | 1,255          | 2,079                   |
| Yarra Ranges (S) — Pt B (d)                | —                             | —                      | —                    | —                           | —                      | —                    | —   | —                            | —              | —                       |
| Bass Strait Islands                        | —                             | —                      | —                    | —                           | —                      | —                    | —   | —                            | —              | —                       |
| French Island                              | —                             | —                      | —                    | —                           | —                      | —                    | —   | —                            | —              | —                       |
| Yallourn Works Area                        | —                             | —                      | —                    | —                           | —                      | —                    | —   | —                            | —              | —                       |
| <b>Gippsland (SD)</b>                      | <b>56</b>                     | <b>—</b>               | <b>4,820</b>         | <b>4</b>                    | <b>—</b>               | <b>200</b>           | <b>1,206</b>  | <b>2,492</b>                 | <b>2,862</b>   | <b>9,087</b>            |
| <b>VICTORIA</b>                            |                               |                        |                      |                             |                        |                      |   |                              |                |                         |
| <b>Victoria</b>                            | <b>1,395</b>                  | <b>34</b>              | <b>157,984</b>       | <b>674</b>                  | <b>16</b>              | <b>62,219</b>        | <b>50,918</b>   | <b>189,911</b>               | <b>228,148</b> | <b>499,269</b>          |

(a) For details of changes to Statistical Local Areas, please refer to paragraphs 28-30 of the Explanatory Notes. (b) Excludes Conversions, etc. (c) Details relating to individual classes of building are available on request. (d) The Shire of Yarra Ranges comprises four Statistical Local Areas (SLA). Three of these are included in the Melbourne Statistical Division and one is included in the Gippsland Statistical Division. Approvals data for these SLAs are shown in Table 8 under the relevant Statistical Divisions.

TABLE 9. BUILDING APPROVALS BY SELECTED STATISTICAL SUBDIVISIONS (a), JANUARY 1997

| Statistical Local Area  | New residential buildings (b) |                        |                      |                             |                        |                      | Non-residential building (c)                                |                         |                |                         |
|---|-------------------------------|------------------------|----------------------|-----------------------------|------------------------|----------------------|---|-------------------------|----------------|-------------------------|
|   | Houses                        |                        |                      | Other residential buildings |                        |                      | Alterations and additions to residential buildings (\$'000) | Private sector (\$'000) | Total (\$'000) | Total building (\$'000) |
|   | Private sector (number)       | Public sector (number) | Total value (\$'000) | Private sector (number)     | Public sector (number) | Total value (\$'000) |   |                         |                |                         |
| <b>GREATER GEELONG CITY PART A STATISTICAL SUBDIVISION</b>    |                               |                        |                      |                             |                        |                      |   |                         |                |                         |
| Greater Geelong (C) —   |                               |                        |                      |                             |                        |                      |   |                         |                |                         |
| — Bellarine — Inner   | 9                             | —                      | 874                  | —                           | —                      | —                    | 207   | 250                     | 250            | 1,331                   |
| — Conio — Inner   | 25                            | —                      | 2,222                | —                           | —                      | —                    | 154   | 790                     | 870            | 3,246                   |
| — Geelong   | 2                             | —                      | 144                  | —                           | —                      | —                    | 702   | 530                     | 747            | 1,593                   |
| — Geelong West  | —                             | —                      | —                    | 2                           | —                      | 100                  | 218   | 140                     | 140            | 458                     |
| — Newtown   | 1                             | —                      | 90                   | —                           | —                      | —                    | 289   | 150                     | 150            | 529                     |
| — South Barwon — Inner  | 15                            | —                      | 2,053                | —                           | —                      | —                    | 200   | 90                      | 748            | 3,001                   |
| <b>Greater Geelong City Part A (SSD)</b>                      | <b>52</b>                     | <b>—</b>               | <b>5,383</b>         | <b>2</b>                    | <b>—</b>               | <b>100</b>           | <b>1,770</b>  | <b>1,950</b>            | <b>2,905</b>   | <b>10,157</b>           |
| <b>BALLARAT CITY STATISTICAL SUBDIVISION</b>                  |                               |                        |                      |                             |                        |                      |   |                         |                |                         |
| Ballarat (C) —  |                               |                        |                      |                             |                        |                      |   |                         |                |                         |
| — Central   | 9                             | —                      | 1,028                | 6                           | 12                     | 1,198                | 433   | 630                     | 630            | 3,289                   |
| — Inner North   | 8                             | —                      | 848                  | 10                          | —                      | 485                  | 207   | 57                      | 57             | 1,596                   |
| — North   | —                             | —                      | —                    | —                           | —                      | —                    | 52  | 62                      | 62             | 114                     |
| — South   | 3                             | —                      | 325                  | —                           | —                      | —                    | 63  | —                       | 1,000          | 1,388                   |
| <b>Ballarat City (SSD)</b>                                    | <b>20</b>                     | <b>—</b>               | <b>2,201</b>         | <b>16</b>                   | <b>12</b>              | <b>1,683</b>         | <b>755</b>  | <b>749</b>              | <b>1,749</b>   | <b>6,387</b>            |
| <b>MILDURA RURAL CITY PART A STATISTICAL SUBDIVISION</b>      |                               |                        |                      |                             |                        |                      |   |                         |                |                         |
| Mildura (RC) — Pt A   | 19                            | —                      | 2,091                | —                           | —                      | —                    | 122   | 620                     | 1,220          | 3,433                   |
| <b>Mildura Rural City Part A (SSD)</b>                        | <b>19</b>                     | <b>—</b>               | <b>2,091</b>         | <b>—</b>                    | <b>—</b>               | <b>—</b>             | <b>122</b>  | <b>620</b>              | <b>1,220</b>   | <b>3,433</b>            |
| <b>GREATER BENDIGO CITY PART A STATISTICAL SUBDIVISION</b>    |                               |                        |                      |                             |                        |                      |   |                         |                |                         |
| Greater Bendigo (C) —   |                               |                        |                      |                             |                        |                      |   |                         |                |                         |
| — Central   | 5                             | —                      | 643                  | —                           | —                      | —                    | 182   | —                       | 50             | 875                     |
| — Eaglehawk   | 3                             | —                      | 474                  | —                           | —                      | —                    | —   | 60                      | 60             | 534                     |
| — Inner East  | 7                             | —                      | 714                  | —                           | —                      | —                    | 101   | —                       | —              | 815                     |
| — Inner North   | 3                             | —                      | 334                  | —                           | —                      | —                    | —   | —                       | —              | 334                     |
| — Inner West  | 8                             | —                      | 729                  | —                           | —                      | —                    | 359   | 130                     | 130            | 1,217                   |
| — Strathfieldsaye   | 4                             | —                      | 231                  | —                           | —                      | —                    | 46  | —                       | —              | 277                     |
| <b>Greater Bendigo City Part A (SSD)</b>                      | <b>30</b>                     | <b>—</b>               | <b>3,124</b>         | <b>—</b>                    | <b>—</b>               | <b>—</b>             | <b>688</b>  | <b>190</b>              | <b>240</b>     | <b>4,052</b>            |
| <b>GREATER SHEPPARTON CITY PART A STATISTICAL SUBDIVISION</b> |                               |                        |                      |                             |                        |                      |   |                         |                |                         |
| Greater Shepparton (C) Pt A                                   | 6                             | —                      | 763                  | —                           | —                      | —                    | 198   | 455                     | 455            | 1,416                   |
| <b>Shepparton City Part A (SSD)</b>                           | <b>6</b>                      | <b>—</b>               | <b>763</b>           | <b>—</b>                    | <b>—</b>               | <b>—</b>             | <b>198</b>  | <b>455</b>              | <b>455</b>     | <b>1,416</b>            |
| <b>WODONGA STATISTICAL SUBDIVISION</b>                        |                               |                        |                      |                             |                        |                      |   |                         |                |                         |
| Indigo (S) — Pt A   | 1                             | —                      | 104                  | —                           | —                      | —                    | —   | —                       | —              | 104                     |
| Towong (S) — Pt A   | —                             | —                      | —                    | —                           | —                      | —                    | —   | —                       | —              | —                       |
| Wodonga (RC)  | 12                            | —                      | 1,052                | —                           | —                      | —                    | 726   | 1,071                   | 1,071          | 2,849                   |
| <b>Wodonga (SSD)</b>  | <b>13</b>                     | <b>—</b>               | <b>1,156</b>         | <b>—</b>                    | <b>—</b>               | <b>—</b>             | <b>726</b>  | <b>1,071</b>            | <b>1,071</b>   | <b>2,953</b>            |
| <b>LA TROBE VALLEY STATISTICAL SUBDIVISION</b>                |                               |                        |                      |                             |                        |                      |   |                         |                |                         |
| Baw Baw (S) — Pt A  | —                             | —                      | —                    | —                           | —                      | —                    | —   | —                       | —              | —                       |
| La Trobe (S) —  |                               |                        |                      |                             |                        |                      |   |                         |                |                         |
| — Moe   | 1                             | —                      | 47                   | 2                           | —                      | 80                   | 55  | —                       | —              | 182                     |
| — Morwell   | 1                             | —                      | 109                  | —                           | —                      | —                    | 38  | 57                      | 427            | 573                     |
| — Traralgon   | 8                             | —                      | 786                  | 2                           | —                      | 120                  | 272   | 230                     | 230            | 1,408                   |
| — Balance   | —                             | —                      | —                    | —                           | —                      | —                    | —   | —                       | —              | —                       |
| Yallourn Works Area   | —                             | —                      | —                    | —                           | —                      | —                    | —   | —                       | —              | —                       |
| <b>La Trobe Valley (SSD)</b>                                  | <b>10</b>                     | <b>—</b>               | <b>941</b>           | <b>4</b>                    | <b>—</b>               | <b>200</b>           | <b>430</b>  | <b>287</b>              | <b>657</b>     | <b>2,228</b>            |

(a) For details of changes to Statistical Local Areas and Statistical Subdivisions, please refer to paragraphs 28-30 of the Explanatory Notes. (b) Excludes Conversions, etc. (c) Details relating to individual classes of building are available on request.

TABLE 10. VALUE OF NON-RESIDENTIAL BUILDING JOBS APPROVED BY CLASS OF BUILDING AND STATISTICAL DIVISION (a)  
(S'000)

| Period  | Hotels etc. | Shops   | Factories | Offices | Other business premises | Educational | Religious | Health  | Entertainment and recreational | Miscellaneous | Total     |
|---|-------------|---------|-----------|---------|-------------------------|-------------|-----------|---------|--------------------------------|---------------|-----------|
| <b>MELBOURNE STATISTICAL DIVISION</b>         |             |         |           |         |                         |             |           |         |                                |               |           |
| 1993-94                                       | 167,762     | 441,505 | 120,873   | 197,917 | 332,785                 | 171,926     | 10,818    | 257,790 | 359,444                        | 77,796        | 2,138,618 |
| 1994-95                                       | 27,930      | 314,547 | 180,794   | 326,322 | 186,075                 | 231,103     | 10,880    | 84,398  | 208,521                        | 85,198        | 1,655,767 |
| 1995-96                                       | 119,585     | 286,401 | 150,986   | 379,055 | 282,968                 | 308,468     | 6,152     | 77,392  | 222,735                        | 100,765       | 1,934,508 |
| 1995 November                                 | 1,780       | 21,097  | 14,504    | 29,939  | 32,455                  | 41,364      | 780       | 10,994  | 4,646                          | 1,498         | 159,057   |
| December                                      | 1,858       | 41,762  | 8,668     | 13,539  | 15,281                  | 32,006      | 1,155     | 975     | 3,167                          | 19,103        | 137,515   |
| 1996 January                                  | 2,190       | 13,655  | 17,953    | 15,741  | 12,178                  | 6,927       | 500       | 3,759   | 50,493                         | 2,122         | 125,521   |
| November                                      | 14,006      | 16,670  | 16,216    | 35,327  | 26,198                  | 11,862      | 850       | 85,367  | 11,989                         | 24,364        | 242,849   |
| December                                      | 47,108      | 17,956  | 18,479    | 26,752  | 15,935                  | 11,918      | 800       | 8,044   | 3,487                          | 11,645        | 162,124   |
| 1997 January                                  | 16,445      | 34,372  | 18,932    | 21,919  | 31,818                  | 19,406      | 3,907     | 9,895   | 4,409                          | 42,560        | 203,662   |
| <b>BARWON STATISTICAL DIVISION</b>            |             |         |           |         |                         |             |           |         |                                |               |           |
| 1993-94                                       | 1,650       | 8,390   | 12,294    | 3,564   | 10,105                  | 4,695       | 559       | 5,187   | 1,071                          | 7,182         | 54,696    |
| 1994-95                                       | 11,770      | 10,598  | 10,028    | 9,922   | 6,010                   | 28,427      | 685       | 1,334   | 8,698                          | 797           | 88,270    |
| 1995-96                                       | 1,550       | 20,026  | 23,299    | 6,910   | 12,502                  | 13,382      | 179       | 9,806   | 5,190                          | 2,627         | 95,471    |
| 1995 November                                 | —           | 400     | 3,389     | 300     | 308                     | 1,000       | —         | —       | 255                            | 357           | 6,009     |
| December                                      | —           | 4,020   | 492       | 100     | —                       | 252         | —         | —       | 150                            | 630           | 5,644     |
| 1996 January                                  | —           | 52      | 12,019    | 880     | 1,689                   | 1,950       | —         | —       | 55                             | 110           | 16,755    |
| November                                      | 62          | 1,325   | 2,100     | 233     | —                       | 307         | —         | 95      | —                              | —             | 4,122     |
| December                                      | —           | 1,929   | 979       | 55      | 378                     | 1,125       | —         | 1,925   | 698                            | 1,216         | 8,306     |
| 1997 January                                  | 330         | 250     | 220       | 1,390   | 277                     | 698         | —         | 120     | 80                             | —             | 3,365     |
| <b>WESTERN DISTRICT STATISTICAL DIVISION</b>  |             |         |           |         |                         |             |           |         |                                |               |           |
| 1993-94                                       | 632         | 1,299   | 2,161     | 820     | 6,609                   | 2,316       | 632       | 8,417   | 506                            | 2,015         | 25,408    |
| 1994-95                                       | 100         | 2,313   | 3,908     | 2,075   | 1,558                   | 2,609       | 1,000     | 2,350   | 2,632                          | 105           | 18,651    |
| 1995-96                                       | 3,842       | 3,389   | 7,189     | 2,440   | 913                     | 5,471       | 159       | 10,786  | 984                            | 2,802         | 37,975    |
| 1995 November                                 | —           | —       | 150       | 405     | 160                     | —           | —         | 151     | —                              | 265           | 1,131     |
| December                                      | 70          | —       | 257       | —       | —                       | —           | —         | —       | 53                             | 102           | 482       |
| 1996 January                                  | —           | —       | 130       | 120     | —                       | 795         | —         | 100     | 80                             | 300           | 1,525     |
| November                                      | —           | 160     | 326       | 129     | 150                     | —           | —         | 3,977   | 235                            | —             | 4,977     |
| December                                      | —           | 112     | 50        | 620     | 428                     | —           | —         | —       | 135                            | 245           | 1,590     |
| 1997 January                                  | —           | 139     | 7,250     | 300     | 160                     | —           | —         | —       | —                              | 130           | 7,979     |
| <b>CENTRAL HIGHLANDS STATISTICAL DIVISION</b> |             |         |           |         |                         |             |           |         |                                |               |           |
| 1993-94                                       | 865         | 3,254   | 2,977     | 1,078   | 1,620                   | 6,418       | 387       | 1,270   | 6,138                          | 2,785         | 26,793    |
| 1994-95                                       | 4,270       | 4,679   | 4,417     | 7,917   | 2,273                   | 8,054       | 410       | 897     | 1,065                          | 2,658         | 36,640    |
| 1995-96                                       | 2,013       | 11,551  | 2,796     | 5,284   | 4,524                   | 3,441       | —         | 8,433   | 3,802                          | 2,885         | 44,730    |
| 1995 November                                 | 84          | 710     | 380       | 1,974   | 920                     | 340         | —         | 761     | 65                             | 350           | 5,584     |
| December                                      | —           | 163     | 455       | 155     | 170                     | —           | —         | —       | 250                            | 350           | 1,543     |
| 1996 January                                  | 600         | 255     | —         | 200     | 1,037                   | 60          | —         | —       | —                              | —             | 2,152     |
| November                                      | —           | 59      | —         | —       | 228                     | —           | —         | 57      | 2,300                          | 182           | 2,826     |
| December                                      | —           | 3,262   | 221       | 3,247   | 234                     | —           | —         | —       | 242                            | —             | 7,206     |
| 1997 January                                  | 250         | —       | 342       | 57      | 300                     | 1,100       | —         | —       | —                              | —             | 2,049     |

TABLE 10. VALUE OF NON-RESIDENTIAL BUILDING JOBS APPROVED BY CLASS OF BUILDING AND STATISTICAL DIVISION (a) continued  
(\$'000)

| Period                               | Hotels etc. | Shops  | Factories | Offices | Other business premises | Educational | Religious | Health | Entertainment and recreational | Miscellaneous | Total  |
|--------------------------------------|-------------|--------|-----------|---------|-------------------------|-------------|-----------|--------|--------------------------------|---------------|--------|
| <b>WIMMERA STATISTICAL DIVISION</b>  |             |        |           |         |                         |             |           |        |                                |               |        |
| 1993-94                              | 883         | 1,605  | 7,618     | 210     | 816                     | 2,035       | —         | 1,006  | 580                            | 120           | 14,874 |
| 1994-95                              | 65          | 490    | 1,004     | 216     | 610                     | 3,437       | 283       | 17,786 | 305                            | 860           | 25,057 |
| 1995-96                              | 172         | 442    | 1,275     | 2,831   | 648                     | 2,899       | —         | 1,220  | 2,220                          | 1,605         | 13,312 |
| 1995 November                        | 122         | —      | 160       | —       | —                       | —           | —         | —      | —                              | —             | 282    |
| December                             | —           | 152    | —         | —       | 180                     | 120         | —         | —      | 500                            | —             | 952    |
| 1996 January                         | —           | —      | 230       | 54      | —                       | —           | —         | —      | —                              | —             | 284    |
| November                             | —           | 350    | 300       | —       | 210                     | —           | —         | 1,600  | 179                            | —             | 2,639  |
| December                             | —           | —      | 1,148     | —       | —                       | —           | —         | —      | —                              | —             | 1,148  |
| 1997 January                         | —           | —      | —         | —       | 218                     | —           | —         | —      | —                              | 412           | 630    |
| <b>MALLEE STATISTICAL DIVISION</b>   |             |        |           |         |                         |             |           |        |                                |               |        |
| 1993-94                              | 83          | 1,432  | 280       | 450     | 2,343                   | 800         | 416       | 1,185  | 301                            | 1,510         | 8,801  |
| 1994-95                              | 845         | 1,365  | 735       | 1,245   | 1,123                   | 6,215       | —         | 774    | 80                             | 86            | 12,468 |
| 1995-96                              | 420         | 6,511  | 3,685     | 3,312   | 2,544                   | 5,527       | 112       | 1,838  | 1,368                          | 1,318         | 26,635 |
| 1995 November                        | —           | 395    | 150       | 200     | —                       | 2,506       | —         | —      | —                              | —             | 3,251  |
| December                             | —           | —      | —         | —       | —                       | —           | —         | —      | —                              | 605           | 605    |
| 1996 January                         | —           | 224    | 2,800     | 530     | 115                     | —           | —         | —      | —                              | 528           | 4,197  |
| November                             | —           | 250    | —         | —       | 120                     | 310         | —         | —      | —                              | —             | 680    |
| December                             | —           | 730    | 50        | 160     | 650                     | 200         | —         | —      | —                              | —             | 1,790  |
| 1997 January                         | 217         | 600    | 340       | —       | 695                     | —           | —         | —      | —                              | —             | 1,852  |
| <b>LODDON STATISTICAL DIVISION</b>   |             |        |           |         |                         |             |           |        |                                |               |        |
| 1993-94                              | n.a.        | n.a.   | n.a.      | n.a.    | n.a.                    | n.a.        | n.a.      | n.a.   | n.a.                           | n.a.          | n.a.   |
| 1994-95                              | n.a.        | n.a.   | n.a.      | n.a.    | n.a.                    | n.a.        | n.a.      | n.a.   | n.a.                           | n.a.          | n.a.   |
| 1995-96                              | 3,313       | 40,832 | 3,079     | 5,121   | 7,670                   | 8,079       | 260       | 150    | 1,310                          | 2,011         | 71,825 |
| 1995 November                        | n.a.        | n.a.   | n.a.      | n.a.    | n.a.                    | n.a.        | n.a.      | n.a.   | n.a.                           | n.a.          | n.a.   |
| December                             | n.a.        | n.a.   | n.a.      | n.a.    | n.a.                    | n.a.        | n.a.      | n.a.   | n.a.                           | n.a.          | n.a.   |
| 1996 January                         | —           | 1,541  | —         | 92      | 60                      | 1,192       | —         | —      | —                              | 398           | 3,283  |
| November                             | —           | 338    | 431       | 370     | 365                     | 250         | 358       | 514    | 317                            | —             | 2,943  |
| December                             | 70          | 100    | 85        | 198     | 1,331                   | 427         | —         | 1,073  | 382                            | 508           | 4,073  |
| 1997 January                         | —           | 60     | 130       | 300     | —                       | 50          | —         | —      | —                              | 51            | 591    |
| <b>GOULBURN STATISTICAL DIVISION</b> |             |        |           |         |                         |             |           |        |                                |               |        |
| 1993-94                              | n.a.        | n.a.   | n.a.      | n.a.    | n.a.                    | n.a.        | n.a.      | n.a.   | n.a.                           | n.a.          | n.a.   |
| 1994-95                              | n.a.        | n.a.   | n.a.      | n.a.    | n.a.                    | n.a.        | n.a.      | n.a.   | n.a.                           | n.a.          | n.a.   |
| 1995-96                              | 2,657       | 5,254  | 11,075    | 4,736   | 6,245                   | 3,110       | 371       | 19,271 | 7,210                          | 6,284         | 66,214 |
| 1995 November                        | n.a.        | n.a.   | n.a.      | n.a.    | n.a.                    | n.a.        | n.a.      | n.a.   | n.a.                           | n.a.          | n.a.   |
| December                             | n.a.        | n.a.   | n.a.      | n.a.    | n.a.                    | n.a.        | n.a.      | n.a.   | n.a.                           | n.a.          | n.a.   |
| 1996 January                         | 710         | 720    | 70        | —       | —                       | 165         | —         | 2,300  | —                              | 946           | 4,911  |
| November                             | 180         | —      | 9,800     | 323     | 644                     | 135         | —         | —      | —                              | 1,818         | 12,900 |
| December                             | —           | 200    | —         | —       | 485                     | 6,100       | 77        | —      | —                              | 80            | 6,942  |
| 1997 January                         | 100         | 675    | —         | 115     | 300                     | 300         | —         | —      | —                              | 778           | 2,268  |

TABLE 10. VALUE OF NON-RESIDENTIAL BUILDING JOBS APPROVED BY CLASS OF BUILDING AND STATISTICAL DIVISION (a)—continued  
(\$'000)

| Period                              | Hotels<br>etc. | Shops   | Factories | Offices | Other<br>business<br>premises | Educa-<br>tional | Religious | Health  | Enterta-<br>inment<br>and<br>recreati-<br>onal | Miscel-<br>laneous | Total     |
|-------------------------------------|----------------|---------|-----------|---------|-------------------------------|------------------|-----------|---------|--|--------------------|-----------|
| OVENS MURRAY STATISTICAL DIVISION   |                |         |           |         |                               |                  |           |         |  |                    |           |
| 1993-94                             | n.a.           | n.a.    | n.a.      | n.a.    | n.a.                          | n.a.             | n.a.      | n.a.    | n.a.   | n.a.               | n.a.      |
| 1994-95                             | n.a.           | n.a.    | n.a.      | n.a.    | n.a.                          | n.a.             | n.a.      | n.a.    | n.a.   | n.a.               | n.a.      |
| 1995-96                             | 749            | 5,574   | 2,536     | 4,338   | 17,402                        | 5,550            | 153       | 3,496   | 1,372  | 987                | 42,157    |
| 1995 November                       | n.a.           | n.a.    | n.a.      | n.a.    | n.a.                          | n.a.             | n.a.      | n.a.    | n.a.   | n.a.               | n.a.      |
| December                            | n.a.           | n.a.    | n.a.      | n.a.    | n.a.                          | n.a.             | n.a.      | n.a.    | n.a.   | n.a.               | n.a.      |
| 1996 January                        | 60             | 1,175   | 70        | 350     | 100                           | 347              | —         | —       | —  | 120                | 2,222     |
| November                            | 180            | 459     | 327       | 190     | —                             | —                | —         | —       | 50   | —                  | 1,206     |
| December                            | 176            | —       | —         | 100     | —                             | 110              | —         | —       | —  | 935                | 1,321     |
| 1997 January                        | 75             | 690     | 1,321     | —       | —                             | —                | —         | —       | —  | 595                | 2,681     |
| EAST GIPPSLAND STATISTICAL DIVISION |                |         |           |         |                               |                  |           |         |  |                    |           |
| 1993-94                             | n.a.           | n.a.    | n.a.      | n.a.    | n.a.                          | n.a.             | n.a.      | n.a.    | n.a.   | n.a.               | n.a.      |
| 1994-95                             | n.a.           | n.a.    | n.a.      | n.a.    | n.a.                          | n.a.             | n.a.      | n.a.    | n.a.   | n.a.               | n.a.      |
| 1995-96                             | 1,036          | 2,535   | 2,351     | 3,126   | 692                           | 1,733            | —         | 3,642   | 895  | 51,449             | 67,457    |
| 1995 November                       | n.a.           | n.a.    | n.a.      | n.a.    | n.a.                          | n.a.             | n.a.      | n.a.    | n.a.   | n.a.               | n.a.      |
| December                            | n.a.           | n.a.    | n.a.      | n.a.    | n.a.                          | n.a.             | n.a.      | n.a.    | n.a.   | n.a.               | n.a.      |
| 1996 January                        | —              | 130     | 150       | —       | 80                            | 58               | —         | —       | —  | 140                | 558       |
| November                            | —              | —       | —         | 50      | 60                            | 200              | —         | —       | —  | 408                | 718       |
| December                            | —              | —       | 80        | —       | —                             | 200              | —         | 1,800   | —  | 66                 | 2,146     |
| 1997 January                        | —              | —       | 80        | —       | 69                            | —                | —         | —       | —  | 60                 | 209       |
| GIPPSLAND STATISTICAL DIVISION      |                |         |           |         |                               |                  |           |         |  |                    |           |
| 1993-94                             | 2,299          | 4,164   | 3,248     | 14,498  | 3,584                         | 8,213            | 154       | 1,713   | 1,852  | 912                | 40,639    |
| 1994-95                             | 1,412          | 9,754   | 6,871     | 5,081   | 4,511                         | 3,630            | 152       | 284     | 2,495  | 3,146              | 37,337    |
| 1995-96                             | 1,050          | 7,931   | 22,345    | 1,883   | 4,728                         | 7,258            | 90        | 530     | 4,389  | 1,900              | 52,104    |
| 1995 November                       | —              | 1,180   | 170       | —       | 144                           | 1,774            | —         | 50      | 140  | 215                | 3,673     |
| December                            | —              | 800     | 404       | 100     | 120                           | 2,789            | —         | —       | —  | 55                 | 4,269     |
| 1996 January                        | —              | 650     | 120       | 258     | 348                           | —                | —         | —       | 621  | 125                | 2,123     |
| November                            | 116            | 770     | 50        | 3,063   | 1,076                         | 1,172            | —         | 2,060   | 1,055  | 1,300              | 10,662    |
| December                            | —              | 142     | 19,661    | —       | 254                           | 4,080            | —         | 692     | —  | 150                | 24,980    |
| 1997 January                        | —              | 530     | 727       | 90      | 50                            | 110              | 165       | —       | —  | 1,190              | 2,861     |
| TOTAL VICTORIA                      |                |         |           |         |                               |                  |           |         |  |                    |           |
| 1993-94                             | 188,389        | 487,069 | 206,188   | 234,292 | 366,837                       | 207,686          | 13,934    | 302,668 | 378,184  | 117,425            | 2,502,670 |
| 1994-95                             | 48,126         | 358,756 | 219,224   | 361,187 | 218,315                       | 303,732          | 15,351    | 121,046 | 230,444  | 99,015             | 1,975,197 |
| 1995-96                             | 136,388        | 390,446 | 230,616   | 419,038 | 340,836                       | 364,917          | 7,476     | 136,564 | 251,475  | 174,633            | 2,452,389 |
| 1995 November                       | 2,244          | 41,562  | 22,214    | 35,308  | 40,999                        | 48,191           | 780       | 12,496  | 5,499  | 3,645              | 212,939   |
| December                            | 2,438          | 47,177  | 11,043    | 14,474  | 26,793                        | 37,939           | 1,155     | 4,081   | 4,242  | 23,077             | 172,420   |
| 1996 January                        | 3,560          | 18,403  | 33,542    | 18,225  | 15,607                        | 11,495           | 500       | 6,159   | 51,250   | 4,789              | 163,531   |
| November                            | 14,544         | 20,381  | 29,549    | 39,685  | 29,051                        | 14,236           | 1,208     | 93,671  | 16,125   | 28,072             | 286,522   |
| December                            | 47,354         | 24,432  | 40,753    | 31,131  | 19,695                        | 24,160           | 877       | 13,535  | 4,844  | 14,846             | 221,628   |
| 1997 January                        | 17,417         | 37,316  | 29,342    | 24,171  | 33,887                        | 21,664           | 4,072     | 10,015  | 4,489  | 45,776             | 228,148   |

(a) As a result of changes to Statistical Division boundaries, data for the periods prior to July 1995 are not directly comparable to data for the periods from July 1995 onward. The Statistical Divisions of Loddon (formerly Loddon-Campaspe), Goulburn, Ovens-Murray, and East Gippsland were significantly affected by the changes, but for the remaining Statistical Divisions the changes were relatively minor.

**TABLE 11. NEW DWELLING UNITS (a) APPROVED, BY TYPE AND STATISTICAL DIVISION (b)  
JANUARY 1997**

| Statistical Division     | New other residential building |   |                   |               |   |           |                   |               | Total new residential building |                |
|--------------------------|--------------------------------|---|-------------------|---------------|---|-----------|-------------------|---------------|--------------------------------|----------------|
|                          | New houses                     | Semi-detached, row or terrace houses, townhouses, etc. of |                   |               | Flats, units or apartments in a building of |           |                   | Total         |                                |                |
|                          |                                | 1 storey  | 2 or more storeys | Total         | 1-2 storeys                                 | 3 storeys | 4 or more storeys |               |                                |                |
| NUMBER OF DWELLING UNITS |                                |   |                   |               |   |           |                   |               |                                |                |
| Melbourne                | 972                            | 326   | 79                | 405           | —   | —         | 241               | 241           | 646                            | 1,618          |
| Barwon                   | 95                             | 2   | —                 | 2             | —   | —         | —                 | —             | 2                              | 97             |
| Western District         | 30                             | —   | —                 | —             | —   | —         | —                 | —             | —                              | 30             |
| Central Highlands        | 43                             | 28  | —                 | 28            | —   | —         | —                 | —             | 28                             | 71             |
| Wimmera                  | 13                             | —   | —                 | —             | —   | —         | —                 | —             | —                              | 13             |
| Mallee                   | 26                             | —   | —                 | —             | —   | —         | —                 | —             | —                              | 26             |
| Loddon                   | 58                             | —   | —                 | —             | —   | —         | —                 | —             | —                              | 58             |
| Goulburn                 | 65                             | —   | —                 | —             | —   | —         | —                 | —             | —                              | 65             |
| Ovens-Murray             | 33                             | 2   | —                 | 2             | 6   | —         | —                 | 6             | 8                              | 41             |
| East Gippsland           | 38                             | —   | 2                 | 2             | —   | —         | —                 | —             | 2                              | 40             |
| Gippsland                | 56                             | 4   | —                 | 4             | —   | —         | —                 | —             | 4                              | 60             |
| <b>Victoria</b>          | <b>1,429</b>                   | <b>362</b>  | <b>81</b>         | <b>443</b>    | <b>6</b>                                    | <b>—</b>  | <b>241</b>        | <b>247</b>    | <b>690</b>                     | <b>2,119</b>   |
| VALUE (\$'000)           |                                |   |                   |               |   |           |                   |               |                                |                |
| Melbourne                | 111,870                        | 19,793  | 7,062             | 26,855        | —   | —         | 32,000            | 32,000        | 58,855                         | 170,725        |
| Barwon                   | 9,686                          | 100   | —                 | 100           | —   | —         | —                 | —             | 100                            | 9,786          |
| Western District         | 2,893                          | —   | —                 | —             | —   | —         | —                 | —             | —                              | 2,893          |
| Central Highlands        | 4,438                          | 1,683   | —                 | 1,683         | —   | —         | —                 | —             | 1,683                          | 6,121          |
| Wimmera                  | 1,507                          | —   | —                 | —             | —   | —         | —                 | —             | —                              | 1,507          |
| Mallee                   | 2,747                          | —   | —                 | —             | —   | —         | —                 | —             | —                              | 2,747          |
| Loddon                   | 6,349                          | —   | —                 | —             | —   | —         | —                 | —             | —                              | 6,349          |
| Goulburn                 | 6,265                          | —   | —                 | —             | —   | —         | —                 | —             | —                              | 6,265          |
| Ovens-Murray             | 3,556                          | 111   | —                 | 111           | 1,140                                       | —         | —                 | 1,140         | 1,251                          | 4,807          |
| East Gippsland           | 3,854                          | —   | 130               | 130           | —   | —         | —                 | —             | 130                            | 3,984          |
| Gippsland                | 4,820                          | 200   | —                 | 200           | —   | —         | —                 | —             | 200                            | 5,020          |
| <b>Victoria</b>          | <b>157,984</b>                 | <b>21,887</b>   | <b>7,192</b>      | <b>29,079</b> | <b>1,140</b>                                | <b>—</b>  | <b>32,000</b>     | <b>33,140</b> | <b>62,219</b>                  | <b>220,203</b> |

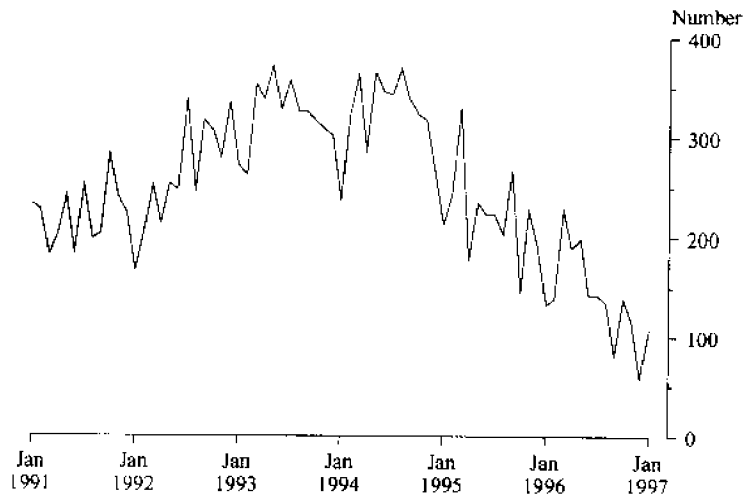
(a) Excludes Conversions, etc. (b) For details of changes to Statistical Divisions, please refer to paragraphs 28-30 of the Explanatory Notes.

**TABLE 12. NUMBER OF DUAL OCCUPANCY (a) DWELLING UNITS APPROVED BY  
STATISTICAL DIVISIONS (SD) AND SELECTED SUBDIVISIONS (SSD)**

| Statistical division / subdivision (b) | 1994-95      | 1995-96      | July - Jan.<br>1996-97 | Jan.<br>1997 |
|--|--------------|--------------|------------------------|--------------|
| Melbourne (SD)                         | 2,672        | 1,919        | 646                    | 94           |
| Greater Geelong City Part A (SSD)      | 108          | 70           | 37                     | 4            |
| Barwon (SD)                            | 164          | 82           | 41                     | 4            |
| Western District (SD)                  | 56           | 26           | 15                     | 3            |
| Ballarat City (SSD) (c)                | n.a.         | 30           | 3                      | —            |
| Central Highlands (SD)                 | 58           | 39           | 7                      | —            |
| Wimmera (SD)                           | 20           | 7            | 6                      | —            |
| Mildura Rural City Part A (SSD)        | 27           | 13           | 8                      | —            |
| Mallee (SD)                            | 49           | 19           | 11                     | —            |
| Greater Bendigo City Part A (SSD)      | 54           | 42           | —                      | —            |
| Loddon (SD) (c)                        | n.a.         | n.a.         | 3                      | 1            |
| Greater Shepparton City Part A (SSD)   | 20           | 7            | 4                      | —            |
| Goulburn (SD) (c)                      | n.a.         | n.a.         | 11                     | —            |
| Wodonga (SSD) (c)                      | n.a.         | n.a.         | 2                      | —            |
| Ovens-Murray (SD) (c)                  | n.a.         | n.a.         | 5                      | 1            |
| East Gippsland (SD) (c)                | n.a.         | n.a.         | 1                      | —            |
| Latrobe Valley (SSD) (c)               | n.a.         | n.a.         | 10                     | 4            |
| Gippsland (SD)                         | 76           | 57           | 19                     | 5            |
| <b>Victoria</b>                        | <b>3,382</b> | <b>2,292</b> | <b>765</b>             | <b>108</b>   |

(a) Refer to paragraph 10 of the explanatory notes. (b) As a result of changes to Statistical Division and Statistical Subdivision boundaries, data for periods prior to July 1995 are not directly comparable to data for periods from July 1995 onward. (c) Data for periods marked "n.a." are not available because boundaries have been significantly altered.

**DUAL OCCUPANCY DWELLING UNITS APPROVED,  
VICTORIA**



**DUAL OCCUPANCY DWELLING UNITS APPROVED,  
EXPRESSED AS A PERCENTAGE OF TOTAL DWELLING UNITS,  
MELBOURNE STATISTICAL DIVISION**

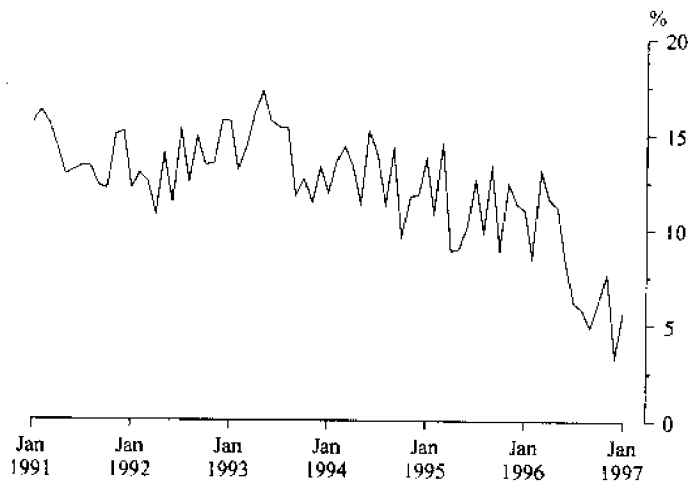


TABLE 13. NUMBER OF DUAL OCCUPANCY (a) DWELLING UNITS APPROVED

| Statistical local area (b) (c) | 1994-95 | 1995-96 | July - Jan.<br>1996-97 | Jan.<br>1997 |
|--------------------------------|---------|---------|------------------------|--------------|
| Banyule (C)                    |         |         |                        |              |
| Heidelberg                     | n.a.    | n.a.    | 6                      | —            |
| North                          | n.a.    | n.a.    | 8                      | —            |
| Total                          | n.a.    | n.a.    | 14                     | —            |
| Bayside (C)                    |         |         |                        |              |
| Brighton                       | 87      | 49      | 22                     | —            |
| South                          | n.a.    | n.a.    | 20                     | 1            |
| Total                          | n.a.    | n.a.    | 42                     | 1            |
| Boroondara (C)                 |         |         |                        |              |
| Camberwell North               | n.a.    | n.a.    | 4                      | —            |
| Camberwell South               | n.a.    | n.a.    | 3                      | —            |
| Hawthorn                       | 23      | 8       | —                      | —            |
| Kew                            | 35      | 24      | 1                      | —            |
| Total                          | —       | 104     | 8                      | —            |
| Brimbank (C)                   |         |         |                        |              |
| Keilor                         | n.a.    | n.a.    | 49                     | 10           |
| Sunshine                       | n.a.    | n.a.    | 22                     | 1            |
| Total                          | n.a.    | n.a.    | 71                     | 11           |
| Cardinia (S)                   |         |         |                        |              |
| Pakenham                       | n.a.    | n.a.    | —                      | —            |
| South                          | n.a.    | n.a.    | —                      | —            |
| Total                          | n.a.    | n.a.    | —                      | —            |
| Casey (C)                      |         |         |                        |              |
| Berwick                        | n.a.    | n.a.    | —                      | —            |
| South                          | n.a.    | n.a.    | —                      | —            |
| Total                          | n.a.    | n.a.    | —                      | —            |
| Darebin (C)                    |         |         |                        |              |
| Northcote                      | n.a.    | n.a.    | 16                     | 2            |
| Preston                        | n.a.    | n.a.    | 12                     | 1            |
| Total                          | n.a.    | n.a.    | 28                     | 3            |
| Frankston (C)                  |         |         |                        |              |
| East                           | n.a.    | n.a.    | 3                      | 2            |
| West                           | n.a.    | n.a.    | 4                      | —            |
| Total                          | n.a.    | n.a.    | 7                      | 2            |
| Glen Eira (C)                  |         |         |                        |              |
| Caulfield                      | 106     | 87      | 46                     | 7            |
| South                          | n.a.    | n.a.    | 29                     | 4            |
| Total                          | n.a.    | n.a.    | 75                     | 11           |
| Greater Dandenong (C)          |         |         |                        |              |
| Dandenong                      | 25      | 9       | 13                     | —            |
| Balance                        | n.a.    | n.a.    | 19                     | 2            |
| Total                          | n.a.    | n.a.    | 32                     | 2            |
| Hobsons Bay (C)                |         |         |                        |              |
| Altona                         | n.a.    | n.a.    | 23                     | 6            |
| Williamstown                   | n.a.    | n.a.    | 13                     | —            |
| Total                          | n.a.    | n.a.    | 36                     | 6            |
| Hume (C)                       |         |         |                        |              |
| Broadmeadows                   | n.a.    | n.a.    | 25                     | 2            |
| Craigieburn                    | n.a.    | n.a.    | 3                      | —            |
| Sunbury                        | n.a.    | n.a.    | 3                      | 2            |
| Total                          | n.a.    | n.a.    | 31                     | 4            |
| Kingston (C)                   |         |         |                        |              |
| North                          | n.a.    | n.a.    | 28                     | 8            |
| South                          | n.a.    | n.a.    | 25                     | 3            |
| Total                          | n.a.    | n.a.    | 53                     | 11           |
| Knox (C)                       |         |         |                        |              |
| Manningham (C)                 | n.a.    | n.a.    | —                      | —            |
| Maribyrnong (C)                | n.a.    | n.a.    | 19                     | 5            |
| Maroondah (C)                  |         |         |                        |              |
| Croydon                        | n.a.    | n.a.    | 9                      | —            |
| Ringwood                       | n.a.    | n.a.    | 3                      | —            |
| Total                          | n.a.    | n.a.    | 12                     | —            |
| Melbourne (C)                  |         |         |                        |              |
| Inner                          | —       | —       | —                      | —            |
| Remainder                      | n.a.    | 5       | 2                      | —            |
| Total                          | n.a.    | 5       | 2                      | —            |
| Melton (S)                     |         |         |                        |              |
| East                           | n.a.    | n.a.    | 5                      | —            |
| Balance                        | n.a.    | n.a.    | —                      | —            |
| Total                          | n.a.    | n.a.    | 5                      | —            |
| Monash (C)                     |         |         |                        |              |
| South-West                     | n.a.    | n.a.    | 36                     | 4            |
| Waverley East                  | n.a.    | n.a.    | 16                     | 4            |
| Waverley West                  | n.a.    | n.a.    | 59                     | 10           |
| Total                          | n.a.    | n.a.    | 111                    | 18           |



TABLE 13. NUMBER OF DUAL OCCUPANCY (a) DWELLING UNITS APPROVED—*continued*

| <i>Statistical local area (b) (c)</i> | <i>1994-95</i> | <i>1995-96</i> | <i>July - Jan.<br/>1996-97</i> | <i>Jan.<br/>1997</i> |
|---------------------------------------|----------------|----------------|--------------------------------|----------------------|
| <b>Moonee Valley (C)</b>              |                |                |                                |                      |
| Essendon                              | 55             | 49             |                                | —                    |
| West                                  | n.a.           | n.a.           | —                              | —                    |
| <i>Total</i>                          | <i>n.a.</i>    | <i>n.a.</i>    | —                              | —                    |
| <b>Moreland (C)</b>                   |                |                |                                |                      |
| Brunswick                             | 6              | 10             | 4                              | —                    |
| Coburg                                | n.a.           | n.a.           | —                              | —                    |
| North                                 | n.a.           | n.a.           | 13                             | 2                    |
| <i>Total</i>                          | <i>n.a.</i>    | <i>n.a.</i>    | <i>17</i>                      | <i>2</i>             |
| <b>Mornington Peninsula (S)</b>       |                |                |                                |                      |
| East                                  | n.a.           | n.a.           | —                              | —                    |
| South                                 | 14             | 14             | —                              | —                    |
| West                                  | n.a.           | n.a.           | 8                              | 2                    |
| <i>Total</i>                          | <i>n.a.</i>    | <i>n.a.</i>    | <i>8</i>                       | <i>2</i>             |
| <b>Nillumbik (S)</b>                  |                |                |                                |                      |
| South-West                            | n.a.           | n.a.           | —                              | —                    |
| Balance                               | n.a.           | n.a.           | —                              | —                    |
| <i>Total</i>                          | <i>n.a.</i>    | <i>n.a.</i>    | —                              | —                    |
| <b>Port Phillip (C)</b>               |                |                |                                |                      |
| St Kilda                              | n.a.           | n.a.           | —                              | —                    |
| West                                  | n.a.           | 9              | 1                              | —                    |
| <i>Total</i>                          | <i>n.a.</i>    | <i>n.a.</i>    | <i>1</i>                       | —                    |
| <b>Stonnington (C)</b>                |                |                |                                |                      |
| Prahran                               | n.a.           | n.a.           | 4                              | —                    |
| Malvern                               | 59             | 33             | 3                              | —                    |
| <i>Total</i>                          | <i>n.a.</i>    | <i>n.a.</i>    | <i>7</i>                       | —                    |
| <b>Whitehorse (C)</b>                 |                |                |                                |                      |
| Box Hill                              | 69             | 39             | 17                             | 5                    |
| Nunawading East                       | n.a.           | n.a.           | 9                              | 1                    |
| Nunawading West                       | n.a.           | n.a.           | 21                             | 6                    |
| <i>Total</i>                          | <i>190</i>     | <i>116</i>     | <i>47</i>                      | <i>12</i>            |
| <b>Whittlesea (C)</b>                 | n.a.           | n.a.           |                                | —                    |
| <b>Wyndham (C)</b>                    | n.a.           | n.a.           |                                | —                    |
| <b>Yarra (C)</b>                      |                |                |                                |                      |
| North                                 | n.a.           | n.a.           | 2                              | —                    |
| Richmond                              | 29             | 25             | 7                              | 4                    |
| <i>Total</i>                          | <i>n.a.</i>    | <i>n.a.</i>    | <i>9</i>                       | <i>4</i>             |
| <b>Yarra Ranges (S) (d)</b>           |                |                |                                |                      |
| Central                               | 2              | 3              | 4                              | —                    |
| North                                 | n.a.           | n.a.           | —                              | —                    |
| South-West                            | n.a.           | n.a.           | 7                              | —                    |
| <i>Total</i>                          | <i>n.a.</i>    | <i>n.a.</i>    | <i>11</i>                      | —                    |
| <b>Melbourne Statistical Division</b> | <b>2,672</b>   | <b>1,919</b>   | <b>646</b>                     | <b>94</b>            |
| <b>Rest of Victoria</b>               | <b>710</b>     | <b>373</b>     | <b>119</b>                     | <b>14</b>            |
| <b>Total Victoria</b>                 | <b>3,382</b>   | <b>2,292</b>   | <b>765</b>                     | <b>108</b>           |

(a) Refer to paragraph 10 of the Explanatory Notes. (b) As a result of changes to Statistical Division and Statistical Subdivision boundaries, data for periods prior to July 1995 are not directly comparable to data for periods from July 1995 onward. (c) Data for periods marked "n.a." are not available because boundaries have been significantly altered. (d) The Shire of Yarra Ranges comprises four Statistical Local Areas (SLA). Approvals data for the three SLAs included in the Melbourne Statistical Division are shown in Table 13. The other SLA is included in the Gippsland Statistical Division.

## EXPLANATORY NOTES

### INTRODUCTION

1. This publication contains monthly details of building work approved.
2. For purposes of comparison, it should be noted that statistics of building approvals are affected from month to month by large projects (e.g. blocks of flats, multi-storey office buildings) approved in particular months and also by the administrative arrangements of government authorities.

### SCOPE AND COVERAGE

3. Statistics of building work approved are compiled from:
  - (a) permits issued by local authorities in areas subject to building control by those authorities; and
  - (b) contracts let or day labour work authorised by Commonwealth, State, semi-government and local government authorities.
  - (c) major building activity which takes place in areas not subject to the normal administrative approval processes (e.g. buildings on remote mine sites).
  - (d) permits issued by licensed private building surveyors. The last category reflects implementation of the 1993 Building Act by the Victorian Government from 1 July 1994.
4. The statistics relate to building activity which includes construction of new buildings, and alterations and additions to existing buildings. Construction activity not defined as building (e.g. construction of roads, bridges, railways, earthworks etc.) is excluded from this publication, but can be found in the ABS publication *Engineering Construction Survey* (8762.0).
5. In relation to work carried out on existing buildings, the statistics include details of non-structural renovation and refurbishment work and the installation of integral building fixtures for which building approval was obtained.
6. From July 1990, the statistics cover:
  - (a) all approved new residential building jobs valued at \$10,000 or more (previously \$5,000 or more)
  - (b) approved alterations and additions to residential buildings valued at \$10,000 or more
  - (c) all approved non-residential building jobs valued at \$50,000 or more (previously \$30,000 or more).

These changes in coverage do not have a statistically significant effect on broad building approvals aggregate data. However, care should be taken in interpreting data for specific classes of non-residential building.

### DEFINITIONS

7. A *building* is defined as a rigid, fixed and permanent structure which has a roof. Its intended purpose is primarily to house people, plant, machinery, vehicles, goods or livestock. An integral feature of a building's design, to satisfy its intended use, is the provision for regular access by persons.
8. A *dwelling unit* is defined as a self-contained suite of rooms, including cooking and bathing facilities and intended for long term residential use. Units (whether self-contained or not) within buildings offering institutional care such as hospitals or temporary accommodation, such as motels, hostels and holiday apartments are not defined as dwelling units. The value of units of this type is included in the appropriate category of non-residential buildings' approved.
9. A *residential building* is defined as a building predominantly consisting of one or more dwelling units. Residential buildings can be either houses or other residential buildings.
  - (a) A *house* is defined as a detached building predominantly used for long term residential purposes and consisting of only one dwelling unit. Thus detached granny flats and detached dwelling units such as caretaker's residences associated with non-residential buildings are defined as houses for the purpose of these statistics.
  - (b) An *other residential building* is defined as a building which is predominantly used for long term residential purposes and which contains (or has attached to it) more than one dwelling unit (e.g. includes townhouses, duplexes, apartment buildings etc.).

10. Details of dual occupancy dwelling units approved are included in Tables 12 and 13 of this publication. The dual occupancy concept applies in each case where two dwelling units occupy a single residential allotment and new dwelling units are created as follows:

- (a) when two new dwelling units are to be erected on one allotment both units are counted.
- (b) when one new dwelling unit is to be erected on an allotment already occupied by an existing dwelling unit, the new unit is counted.
- (c) when an existing dwelling unit is to be altered or added to, to create two dwelling units, one new unit is counted.
- (d) when a non-residential building is to be altered and/or added to, to create two dwelling units, both units are counted.

11. From the January 1995 issue of this publication, the number of dwelling units approved as part of alterations and additions to or conversions of existing residential or non-residential buildings and as part of the construction of non-residential building is shown separately in Table 1 under the heading of 'Conversions, etc.', and is included in the total number of dwelling units shown in the table. Previously, such dwellings were only included as a footnote.

12. In addition, from the January 1995 issue, the seasonally adjusted and trend estimates for the number of dwelling units approved, shown in Table 3, include these conversions, etc. Previously, only dwelling units approved as part of the construction of new residential buildings were included in these estimates.

13. The value of new residential building approved continues to exclude the value of dwelling units approved as part of alterations and additions to or conversions of existing residential or non-residential buildings and as part of the construction of non-residential building. Approved building work represented by these conversions, etc. jobs continues to be included in the value of alterations and additions to residential buildings or in the value of non-residential building as appropriate.

14. Value data are derived by aggregation of the estimated value (when completed) of building work (excluding value of land and landscaping but including site preparation) as reported on approval documents. For 'houses', these estimates are usually a reliable indicator of the completed value of the building. However, for 'other residential buildings' and 'non-residential buildings' these estimates can differ significantly from the completed value of the building.

#### BUILDING CLASSIFICATION

15. *Ownership of a building* is classified as either Public Sector or Private Sector according to the sector of the intended owner of the completed building as evident at the time of approval. Residential buildings being constructed by private sector builders under government housing authority schemes whereby the authority has contracted, or intends to contract, to purchase the buildings on or before completion, are classified as public sector.

16. *Functional classification of buildings:* a building is classified according to its intended major function. Hence a building which is ancillary to other buildings or forms a part of a group of related buildings is classified to the function of the building and not to the function of the group as a whole. An example of this can be seen in the treatment of building work approved for a factory complex. In this case a detached administration building would be classified to Offices, a detached cafeteria building to Shops, while factory buildings would be classified to Factories. An exception to this rule is the treatment of group accommodation buildings e.g. a student accommodation building on a university campus would be classified to Educational.

#### SEASONAL ADJUSTMENT

17. Seasonal adjustment is a means of removing the estimated effects of normal seasonal variation from the series so that the effects of other influences on the series may be more clearly recognised.

18. Table 3 shows seasonally adjusted estimates for both private and total dwellings. For the four series shown, account has been taken of normal seasonal factors and 'trading day' effects (arising from the varying numbers of Sundays, Mondays, Tuesdays etc. in the month) and the effect of movement in the date of Easter which may, in successive years, affect figures for different months.

19. Seasonal adjustment procedures do not aim to remove the irregular or non-seasonal influences which may be present in any particular month, such as the effect of the approval of large projects or as a consequence of the administrative arrangements of approving authorities. These irregular influences that are highly volatile can make it difficult to interpret the movement of the series even after adjustment for seasonal variation.

20. Most of the component series have been seasonally adjusted independently. Therefore, the adjusted components may not add to the adjusted totals. Further, the difference between independently seasonally adjusted series does not necessarily produce series which are optimum or even adequate adjustments of the similarly derived original series. Thus the figures which can be derived by subtracting seasonally adjusted private sector dwelling units from the seasonally adjusted total should not be used to represent seasonally adjusted public sector dwelling units.

21. As happens with all seasonally adjusted series, the seasonal factors are reviewed annually to take account of each additional year's data. For Building Approvals, the results of the latest review are shown in the July issue each year. Further information about seasonal adjustment can be obtained from the Assistant Director of Time Series Analysis, Canberra, on (06) 252 6345.

#### TREND ESTIMATES

22. Seasonally adjusted series can be smoothed to reduce the impact of the irregular component in the adjusted series. This smoothed seasonally adjusted series is called a trend estimate.

23. Table 3 shows trend estimates for both private and total dwellings. These are obtained by applying a 13-term Henderson-weighted moving average to all months of the respective seasonally adjusted series except the last six months. Trend series are created for the last six months by applying surrogates of the Henderson moving average to the seasonally adjusted time series. For further information, see *A Guide to Interpreting Time Series - Monitoring 'Trends': an Overview* (1348.0).

24. While the smoothing technique described in paragraphs 22 and 23 enables trend estimates to be produced for the latest few months, it does result in revisions to the trend estimates as new data become available. Generally, revisions become smaller over time and, after three months, usually have a negligible impact on the series. Revisions to the original data and re-analysis of seasonal factors may also lead to revisions to the trend.

#### ESTIMATES AT CONSTANT PRICES

25. Estimates of the quarterly value of building approvals at average 1989-90 prices are presented in Table 4. (Note: monthly value data at constant prices are not available.)

26. Constant price estimates measure changes in value after the direct effects of price changes have been eliminated. The deflators used to revalue the current price estimates are derived from the same price data underlying the deflators compiled for the dwelling and non-dwelling construction components of the national accounts aggregate 'Gross fixed capital expenditure'.

27. Estimates at constant prices are subject to a number of approximations and assumptions. Further information on the nature and concepts of constant price estimates is contained in Chapter 4 of *Australian National Accounts: Concepts, Sources and Methods* (5216.0).

#### AUSTRALIAN STANDARD GEOGRAPHICAL CLASSIFICATION (ASGC)

28. Area statistics are now being classified to the *Australian Standard Geographical Classification, 1996 Edition* (1216.0), effective from 1 July 1996, and ASGC terminology has been adopted in the presentation of building statistics.

29. The 1996 edition of the ASGC includes some changes to Victorian Statistical Divisions (SDs), Statistical Subdivisions (SSDs) and Statistical Local Areas (SLAs). Further details are:

- (a) The Shire of Milawa was renamed to Wangaratta and constituted as a Rural City.
- (b) Western Fringe Melbourne SSD (in Melbourne SD) has been renamed Melton-Wyndham SSD.
- (c) (i) The boundary of the Bendigo Statistical District has been extended to include a part transferred from Greater Bendigo (C) - Part B SLA to Greater Bendigo (C) - Strathfieldsaye SLA. There are consequential changes to Greater Bendigo City Part A and North Loddon SSDs.
- (ii) All SLAs in Greater Bendigo (C) LGA have been redefined. The seven new SLAs are: Greater Bendigo (C) - Central, Greater Bendigo (C) - Eaglehawk, Greater Bendigo (C) - Inner East, Greater Bendigo (C) - Inner North, Greater Bendigo (C) - Inner West, Greater Bendigo (C) - Strathfieldsaye (in Greater Bendigo City Part A SSD) and Greater Bendigo (C) - Part B (in North Loddon SSD).

- (d) The following SLA splits (and boundary changes) have occurred:
- (i) Cardinia (S) – Pakenham has been split into two SLAs, Cardinia (S) – Pakenham (which also includes a part from Cardinia (S) – South) and Cardinia (S) – North
  - (ii) Casey (C) – Berwick lost part to Casey (C) – South; remainder has been split into two SLAs, Casey (C) – Berwick and Casey (C) – Hallam
  - (iii) Casey (C) – South has been split into two SLAs, Casey (C) – South (which also includes a part from Casey (C) – Berwick) and Casey (C) – Cranbourne
  - (iv) Knox (C) has been split into two SLAs, Knox (C) – North and Knox (C) – South
  - (v) Manningham (C) has been split into two SLAs, Manningham (C) – East and Manningham (C) – West
  - (vi) Moira (S) has been split into two SLAs, Moira (S) – East and Moira (S) – West
  - (vii) Nillumbik (S) Bal has been split into two SLAs, Nillumbik (S) – South (which also includes a part from Nillumbik (S) – South-West) and Nillumbik (S) Bal
  - (viii) Pyrenees (S) has been split into two SLAs, Pyrenees (S) – North and Pyrenees (S) – South
  - (ix) Swan Hill (RC) Bal has been split into two SLAs, Swan Hill (RC) – Robinvale and Swan Hill (RC) Bal
  - (x) Whittlesea (C) has been split into two SLAs, Whittlesea (C) – North and Whittlesea (C) – South
  - (xi) Wyndham (C) has been split into three SLAs, Wyndham (C) – North-West, Wyndham (C) – Werribee and Wyndham (C) Bal
- (e) There have been changes between the following boundaries:
- (i) Ballarat (C) – Central and Ballarat (C) – Inner North
  - (ii) Ballarat (C) – Inner North and Ballarat (C) – South
  - (iii) Banyule (C) – Heidelberg and Banyule (C) – North
  - (iv) Colac–Otway (S) – Colac, and Colac–Otway (S) – North
  - (v) East Gippsland (S) – Orbost and East Gippsland (S) Bal
  - (vi) Geelong and Geelong West
  - (vii) Glenelg (S) – Heywood and Glenelg (S) – North
  - (viii) Glenelg (S) – Heywood and Glenelg (S) – Portland
  - (ix) Loddon (S) – North and Loddon (S) – South
  - (x) Macedon Ranges (S) – Kyneton and Macedon Ranges (S) Bal
  - (xi) Maroondah (C) – Croydon and Maroondah (C) – Ringwood
  - (xii) Moonee Valley (C) – Essendon and Moonee Valley (C) – West
  - (xiii) Moyne (S) Bal abolished: split between Moyne (S) – South (renamed to Moyne (S) – South-West) and new SLA Moyne (S) – North-West
  - (xiv) Moyne (S) – South created from Moyne (S) – South-West and the southern part of Moyne (S) Bal
  - (xv) Nillumbik (S) – South-West, and Nillumbik (S) – South
  - (xvi) Surf Coast (S) – East and Surf Coast (S) – West
  - (xvii) Wangaratta (RC) – North (previously Milawa (S) – North) and Wangaratta (RC) – South (previously Milawa (S) – South)
  - (xviii) Wangaratta (RC) – Central renamed from Milawa (S) – Wangaratta
  - (xix) Wellington (S) – Avon and Wellington (S) – Maffra

30. Tables 8, 9 and 13 show approvals statistics according to the new SLA structure for July 1996. Tables 10, 11, 12 and 13 include data for previous periods relating to those geographic areas for which no boundary changes have been made and for SDs to which only minor boundary changes have been made. (Historical data for SDs subject to significant boundary changes can, in some instances, be provided as a special data service. Charges apply for these services.)

UNPUBLISHED DATA  
AND RELATED  
PUBLICATIONS

31. The ABS can also make available certain building approvals data which are not published. Where it is not practicable to provide the required information by telephone, data can be provided in the following forms: microfiche, photocopy, computer printout and clerically extracted tabulation. A charge may be made for providing unpublished information in these forms.

32. Other ABS publications which may be of interest include:

*Building Approvals, Australia* (8731.0) - issued monthly  
*Dwelling Unit Commencements Reported by Approving Authorities, Victoria* (8741.2) - issued monthly  
*Building Activity, Australia: Dwelling Unit Commencements, Preliminary* (8750.0) - issued quarterly  
*Building Activity, Victoria* (8752.2) - issued quarterly

33. Current publications produced by the ABS are listed in the *Catalogue of Publications and Products, Australia* (1101.0). The ABS also issues, on Tuesdays and Fridays, a *Release Advice* (1105.0) which lists publications to be released in the next few days. The Catalogue and Release Advice are available from any ABS office.

ELECTRONIC SERVICES

34. A large range of data is available via on-line services, diskette, magnetic tape, tape cartridge and CD ROM. For more details about our electronic data services, contact any ABS Office. Selected ABS statistics are available on floppy disk. Further information is available on (06) 252 6684.

RECORDED MESSAGE  
SERVICES

0055 26400  
 Consumer Price Index  
 National Accounts  
 Balance of Payments  
 Labour Force Estimates  
 Average Weekly Earnings  
 Estimated Resident Population

SYMBOLS AND USAGES

In this publication, Cities are marked (C), Rural Cities (RC), Boroughs (B), and Shires (S).

.. not applicable  
 — nil or rounded to zero  
 r figure or series revised since previous issue  
 n.a. not available

35. Where figures have been rounded, discrepancies may occur between sums of the component items and totals.

**STUART JACKSON**  
 Regional Director



## **For more information . . .**

The ABS publishes a wide range of statistics and other information on Australia's economic and social conditions. Details of what is available in various publications and other products can be found in the ABS Catalogue of Publications and Products available from all ABS Offices.

### **ABS Products and Services**

Many standard products are available from ABS bookshops located in each State and Territory. In addition to these products, information tailored to the needs of clients can be obtained on a wide range of media by contacting your nearest ABS Office. The ABS also provides a Subscription Service for standard products and some tailored information services.

### **National Dial-a-Statistic Line**

0055 86 400

*Steadycom P/L: premium rate 25c/20 secs.*

This number gives 24-hour access, 365 days a year, for a range of important economic statistics including the CPI.

### **Internet**

<http://www.abs.gov.au>

A wide range of ABS information is available via the Internet, with basic statistics available for each State, Territory and Australia. We also have Key National Indicators, ABS product release details and other information of general interest.

## **Sales and Inquiries**

|          |  |
|----------|--|
| Keylink  | STAT.INFO/ABS                                    |
| X.400    | (C:Australia,PUB:Telememo,O:ABS,FN:STAT,SN:INFO) |
| Internet | stat.info@abs.telememo.au                        |

|                             |               |
|-----------------------------|---------------|
| National Mail Order Service | (06) 252 5249 |
| Subscription Service        | 1800 02 0608  |

|           | <b>Information Inquiries</b> | <b>Bookshop Sales</b> |
|-----------|------------------------------|-----------------------|
| SYDNEY    | (02) 9268 4611               | (02) 9268 4620        |
| MELBOURNE | (03) 9615 7755               | (03) 9615 7755        |
| BRISBANE  | (07) 3222 6351               | (07) 3222 6350        |
| PERTH     | (09) 360 5140                | (09) 360 5307         |
| ADELAIDE  | (08) 8237 7100               | (08) 8237 7582        |
| CANBERRA  | (06) 252 6627                | (06) 207 0326         |
| HOBART    | (03) 6222 5800               | (03) 6222 5800        |
| DARWIN    | (08) 8943 2111               | (08) 8943 2111        |



Client Services, ABS, PO Box 10, Belconnen ACT 2616

Produced by the Australian Government Publishing Service  
© Commonwealth of Australia 1997



2873120001978

ISSN 1031-1998

**Recommended retail price: \$15.50**